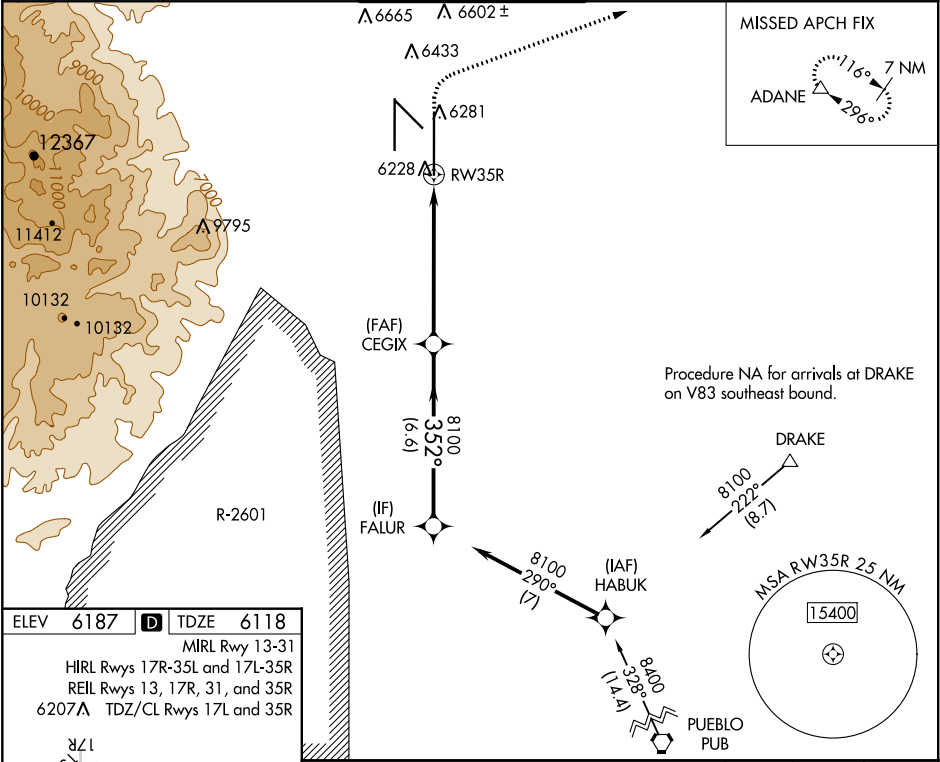


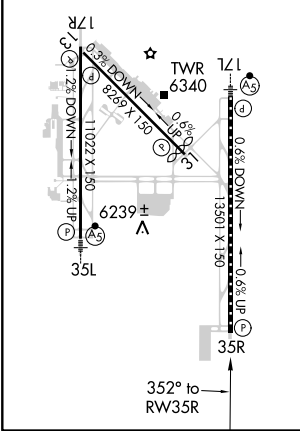
WAAS CH 53602 W35B	APP CRS 352°	Rwy Idg TDZE 13501 6118 Apt Elev 6187
--	------------------------	---

RNAV (GPS) Y RWY 35R
CITY OF COLORADO SPRINGS MUNI (COS)

⚠ For uncompensated Baro-VNAV systems, LNAV/VNAV NA below -21°C (-5°F) or above 39°C (103°F). DME/DME RNP-0.3 NA. RADAR monitoring required when R-2601 in use.	MISSED APPROACH: Climb to 6600 then climbing right turn to 9000 direct ADANE and hold.			
ATIS 125.0 254.3	SPRINGS APP CON 124.0 257.875	SPRINGS TOWER 119.9 360.6	GND CON 121.7 348.6	CLNC DEL 134.45 363.125



ELEV 6187	D	TDZE 6118
MIRL Rwy 13-31		
HIRL Rwy 17R-35L and 17L-35R		
REIL Rwy 13, 17R, 31, and 35R		
6207A TDZ/CL Rwy 17L and 35R		



VGSI and RNAV glidepath not coincident (VGSI Angle 3.00/TCH 72).				6600 ↑	9000 ↗	ADANE △

SW-1, 03 DEC 2020 to 31 DEC 2020

SW-1, 03 DEC 2020 to 31 DEC 2020