

WAAS CH <b>97613</b> <b>W08A</b>	APP CRS <b>081°</b>	Rwy Idg <b>6849</b> TDZE <b>4229</b> Apt Elev <b>4229</b>
--	------------------------	---

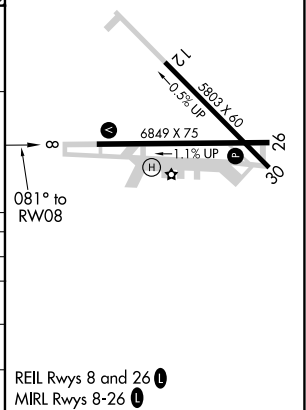
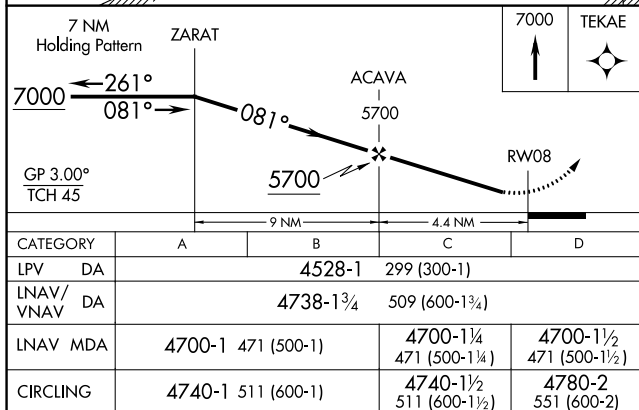
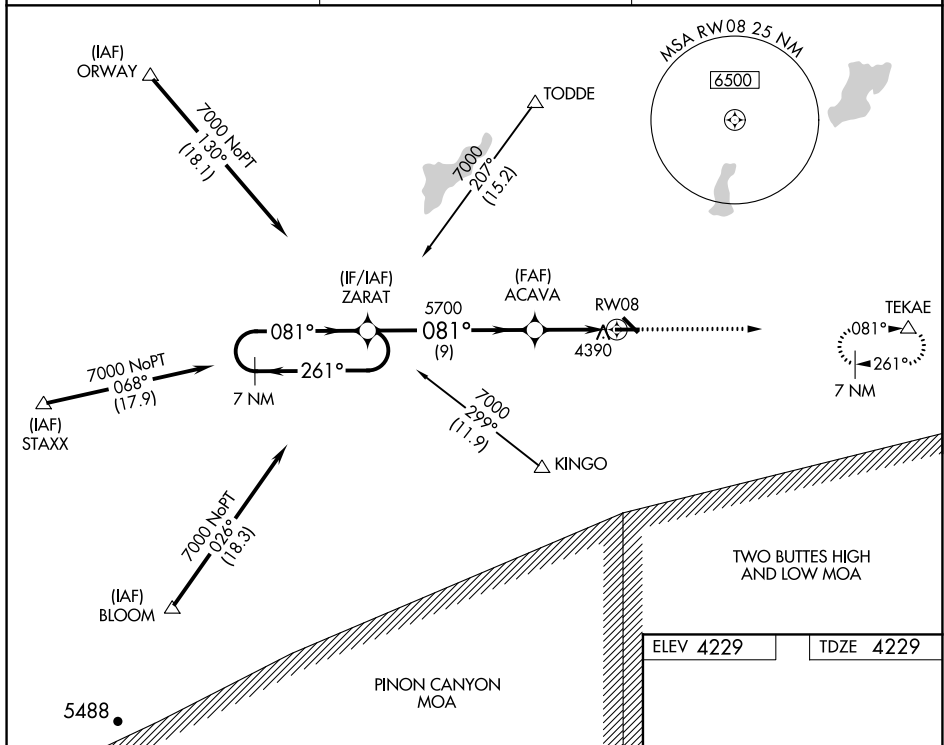
RNAV (GPS) RWY 8  
LA JUNTA MUNI (LHX)

**A** Baro-VNAV NA when using Lamar altimeter setting. For uncompensated Baro-VNAV systems, LNAV/VNAV NA below -23°C (-9°F) or above 40°C (104°F). DME/DME RNP-0.3 NA.

**A** Visibility reduction by helicopters NA. When local altimeter setting not received, use Lamar altimeter setting and increase all DA/MDA 180 feet and increase all visibilities  $\frac{3}{4}$  mile.

**MISSED APPROACH:**  
Climb to 7000 direct  
TEKAE and hold.

ASOS <b>135.525</b>	DENVER CENTER <b>128.375 379.95</b>	UNICOM <b>123.0 (CTAF) 0</b>
------------------------	--	---------------------------------



SW-1, 03 DEC 2020 to 31 DEC 2020

SW-1, 03 DEC 2020 to 31 DEC 2020