

APP CRS <b>022°</b>	Rwy Idg <b>5006</b>
TDZE <b>6870</b>	
Apt Elev <b>6877</b>	

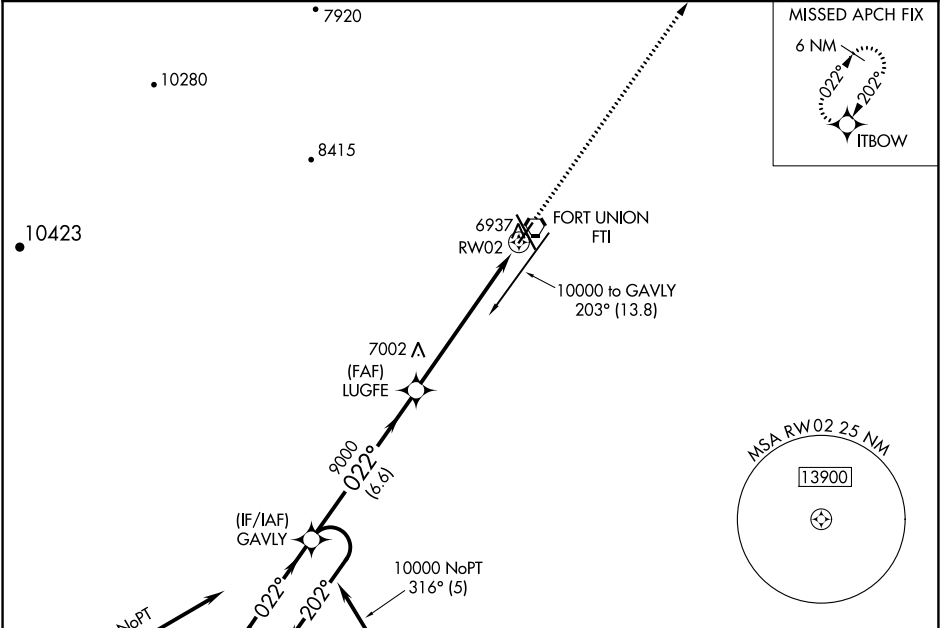
**RNAV (GPS) RWY 2**  
LAS VEGAS MUNI (LVS)

**▼** DME/DME RNP-0.3 NA.  
**▲** Inoperative table does not apply to Cat C.  
If local altimeter setting not received, use Santa Fe Muni altimeter setting and increase all MDAs 200 feet.

ODALS

MISSED APPROACH: Climb to 10000 direct ITBOW and hold.

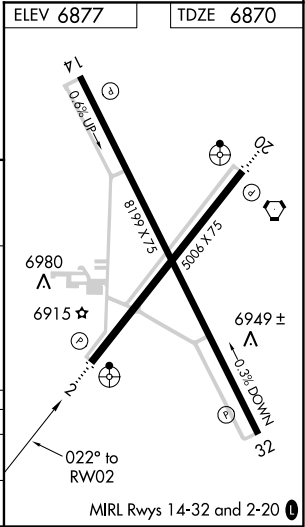
ASOS <b>118.525</b>	ALBUQUERQUE CENTER <b>132.8 346.35</b>	UNICOM <b>122.8 (CTAF) 0</b>
------------------------	---	---------------------------------



ELEV 6877 TDZE 6870

6 NM Holding Pattern, GAVLY, VDP NA when using Santa Fe Muni altimeter setting, LUGFE, 10000, ITBOW, 1.2 NM to RW02, 3.06° TCH 40, 9000, 6.6 NM, 5.3 NM, 1.2 NM.

CATEGORY	A	B	C	D
RNAV MDA	7280-¾ 410 (500-¾)	7280-1¼ 410 (500-1¼)	7280-1½ 410 (500-1½)	NA
CIRCLING	7400-1 523 (600-1)	7420-1 543 (600-1)	7420-1½ 543 (600-1½)	NA



SW-1, 03 DEC 2020 to 31 DEC 2020

SW-1, 03 DEC 2020 to 31 DEC 2020