

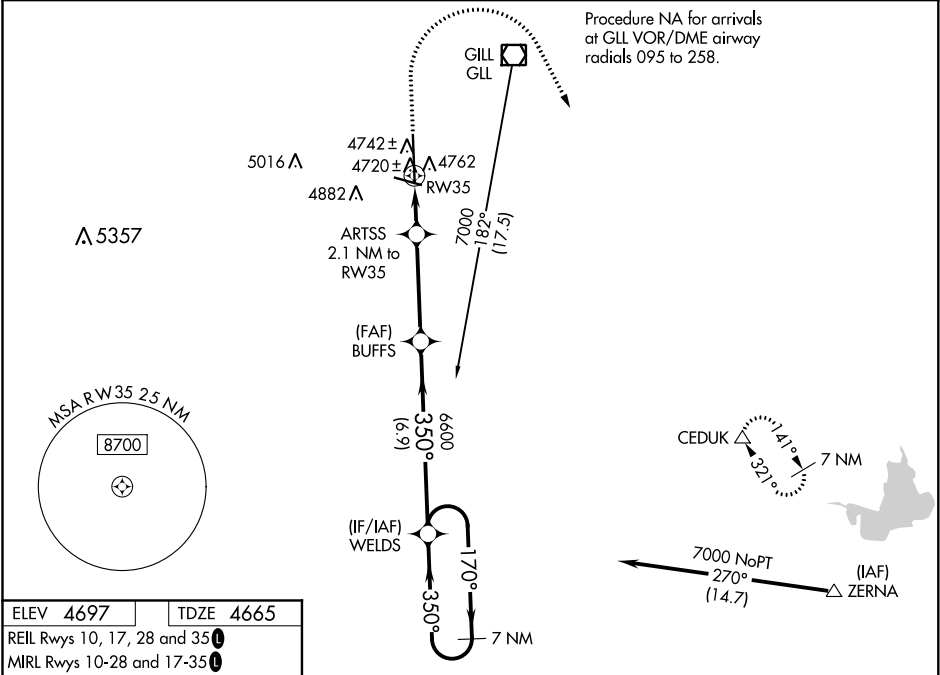
WAAS CH <b>69607</b> <b>W35A</b>	APP CRS <b>350°</b>	Rwy Idg TDZE Apt Elev	<b>8900</b> <b>4665</b> <b>4697</b>
--	------------------------	-----------------------------	---

RNAV (GPS) RWY 35  
GREELEY-WELD COUNTY (GXY)

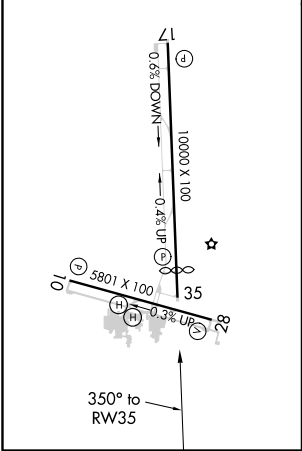
⚠ For uncompensated Baro-VNAV systems, LNAV/VNAV NA below -24°C (-11°F) or above 49°C (121°F). DME/DME RNP-0.3 NA. When local altimeter setting not received, use Northern Colorado Rgnl altimeter setting: increase LPV DA to 4950 feet and visibility ¼ SM, LNAV/VNAV DA to 5000 feet and visibility ¼ SM; increase all MDAs 100 feet and visibility LNAV Cat C/D ¾ SM and Circling Cat C/D ¼ SM. VDP and Baro-VNAV NA when using Northern Colorado Rgnl altimeter setting.

⚠ MISSED APPROACH: Climb to 5300 then climbing right turn to 7000 direct CEDUK and hold.

AWOS-3PT <b>135.175</b>	DENVER APP CON <b>134.85 251.125</b>	CLNC DEL <b>126.65</b>	UNICOM <b>122.8 (CTAF) 0</b>
----------------------------	---	---------------------------	---------------------------------



ELEV <b>4697</b>	TDZE <b>4665</b>
REIL Rwy 10, 17, 28 and 35	
MIRL Rwy 10-28 and 17-35	



5300	7000	CEDUK	WELDS	7 NM Holding Pattern
↑	↶	△		
*LNAV only	ARTSS 2.1 NM to RW35	BUFFS 6600	350°	170° → 7000
	*1 NM to RW35		350°	
	1 NM	1.1 NM	3.9 NM	6.9 NM
				GP 3.00° TCH 51
CATEGORY	A	B	C	D
LPV DA		4865-¾	200 (200-¾)	
LNAV/VNAV DA		4915-¾	250 (300-¾)	
LNAV MDA		5020-1	355 (400-1)	
CIRCLING	5120-1 423 (500-1)	5200-1 503 (600-1)	5200-1½ 503 (600-1½)	5380-2¼ 683 (700-2¼)