

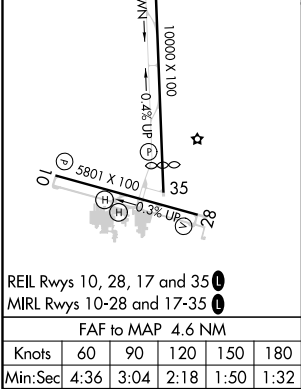
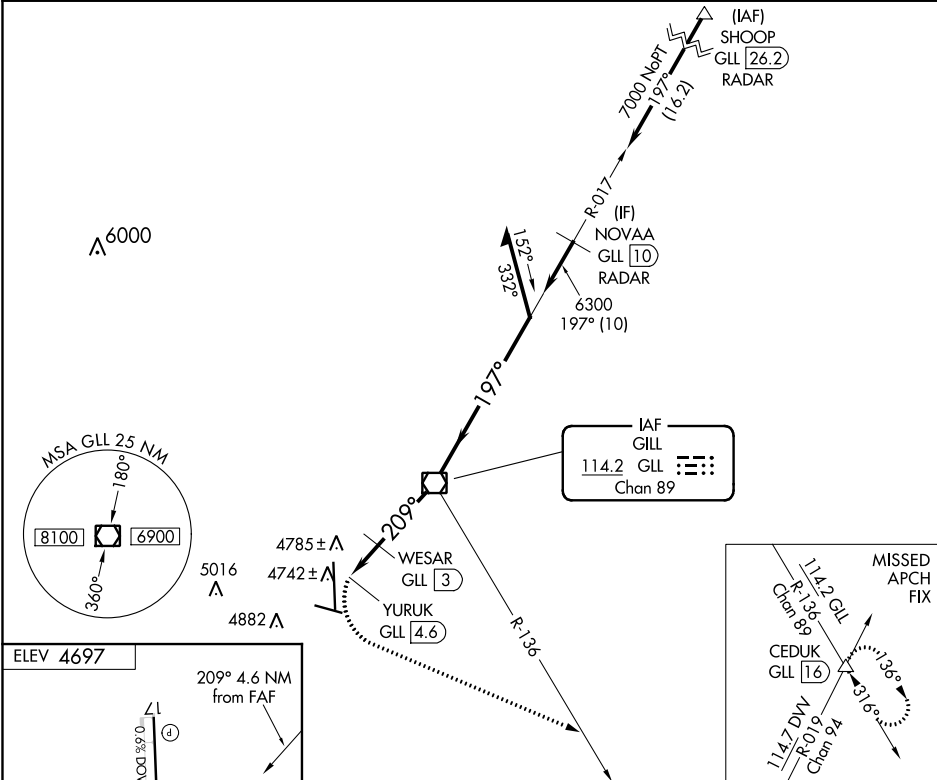
VOR/DME GLL 114.2 Chan 89	APP CRS 209°	Rwy Idg TDZE Apt Elev	N/A N/A 4697
---	------------------------	-----------------------------	---

VOR-A

GREELEY-WELD COUNTY (GXY)

V When local altimeter setting not received, use Northern Colorado Rgnl altimeter setting and increase all MDA 100 feet and visibility Cat C/D and WESAR fix minimums Cat C/D visibility ¼ SM. DME required.	MISSED APPROACH: Climbing left turn to 7000 on heading 100° and GLL VOR/DME R-136 to CEDUK INT/GLL 16 DME and hold.
---	---

AWOS-3PT 135.175	DENVER APP CON 134.85 251.125	CLNC DEL 126.65	UNICOM 122.8 (CTAF) 0
----------------------------	---	---------------------------	---------------------------------



7000	GLL R-136	CEDUK	GLL VOR/DME	Remain within 10 NM
hdg 100°				
	WESAR GLL 3			
	YURUK GLL 4.6			
	209°	6300	197°	7000
	5300*			
	1.6 NM	3 NM		
CATEGORY	A	B	C	D
C CIRCLING	5300-1	603 (700-1)	5300-1¾ 603 (700-1¾)	5380-2¼ 683 (700-2¼)
WESAR FIX MINIMUMS (DME REQUIRED)				
C CIRCLING	5120-1 423 (500-1)	5200-1 503 (600-1)	5200-1½ 503 (600-1½)	5380-2¼ 683 (700-2¼)