

ILS or LOC RWY 21
ROSWELL AIR CENTER (ROW)

MALSR

MISSED APPROACH: Climb to 5000 then climbing right turn to 6000 on CME VORTAC R-195 to CME VORTAC and hold.

ATIS 128.45 306.2	ROSWELL APP CON★ 119.6 239.0	ROSWELL TOWER★ 118.5 (CTAF) 0 233.7	GND CON 121.9 348.6	CLNC DEL 132.875 282.25	UNICOM 122.95
----------------------	---------------------------------	--	------------------------	----------------------------	------------------

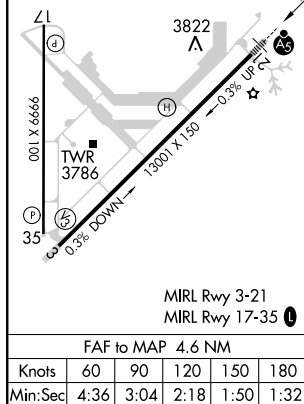
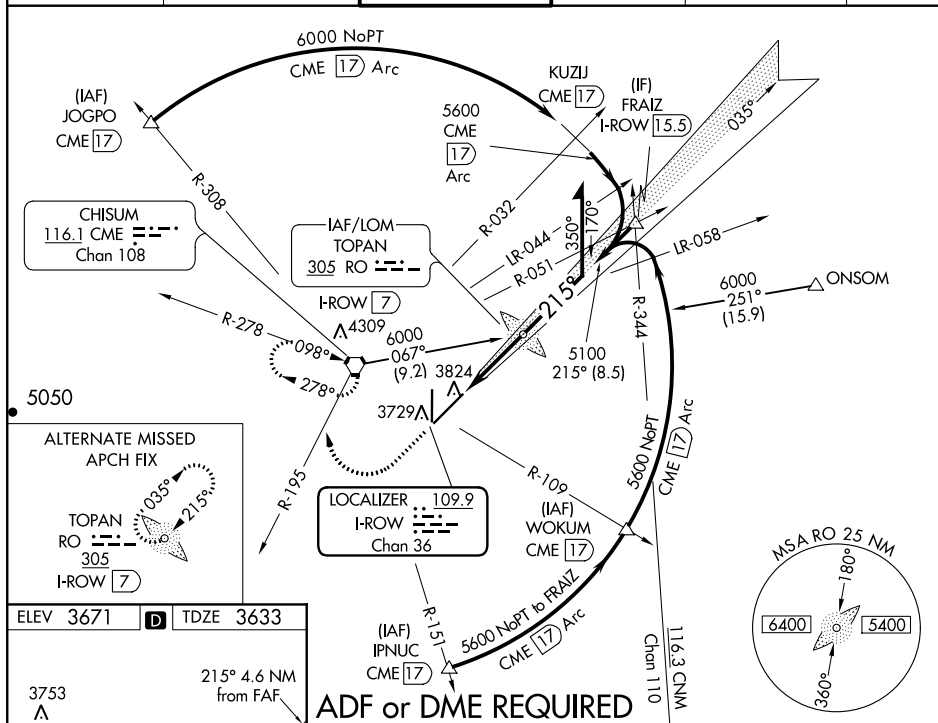


Diagram illustrating a LOC course with various parameters and a table below it.

Diagram Labels:

- 5000 (Altitude)
- 6000 (Altitude)
- CME (Course Marker End)
- R-195 (Range)
- TOPAN LOM (Top of Antenna Line of Movement)
- I-ROW (Intermediate Row of Waypoints)
- 7 (Waypoint number)
- 035° (Bearing)
- Remain within 10 NM (Instruction)
- 5018 (Altitude)
- 215° (Bearing)
- 5600 (Altitude)
- 5100 (Altitude)
- GS 2.70° (Glide Slope)
- TCH 61 (Threshold Crossing Height)
- 1.1 NM (Distance)
- 3.5 NM (Distance)

CATEGORY	A	B	C	D
S-ILS 21	3833-½ 200 (200-½)			
S-LOC 21	4020-½	387 (400-½)	4020-⅝	387 (400-⅝)
CIRCLING	4140-1	469 (500-1)	4140-1½ 469 (500-1½)	4240-2 569 (600-2)