

APP CRS  
**035°**

Rwy Idg  
TDZE  
**5757**

Apt Elev  
**5762**

# RNAV (GPS) RWY 3

PERRY STOKES (TAD)

RNP APCH.

▼

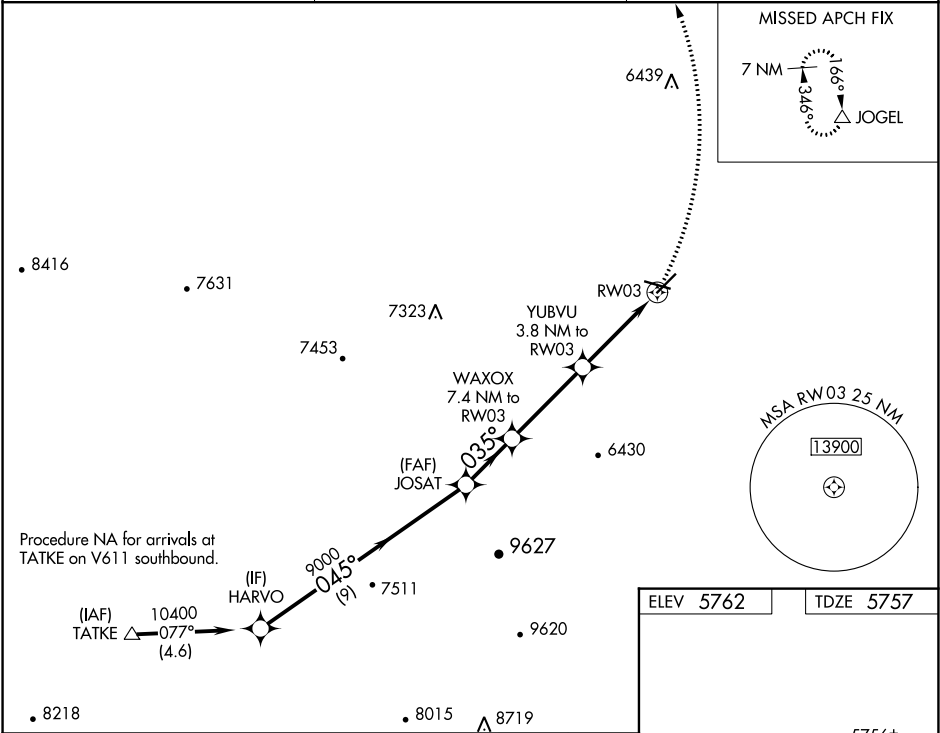
⚠

❄ -26°C

Circling NA to Rwy 9 and 27. VDP NA when using Pueblo Memorial altimeter setting. When local altimeter setting not received, use Pueblo Memorial altimeter setting and increase all MDAs 300 feet; increase LNAV Cts A/B visibility ¼ SM and Cts C/D visibility 1 SM and Circling Cts A/B visibility ¼ SM, Cat C 1 SM, and Cat D ½ SM.

MISSED APPROACH: Climbing left turn to 8900 direct JOGEL and hold.

AWOS-3 <b>119.025</b>	DENVER CENTER <b>128.375 379.95</b>	UNICOM <b>122.8 (CTAF) 0</b>
--------------------------	--	---------------------------------



VGSI and descent angle not coincident (VGSI Angle 3.00/TCH 40).				
HARVO 10400 045° 9000 035° 8180 7040				
JOSAT 3.10° TCH 36 7.4 NM to RW03				
YUBVU 3.8 NM to RW03 2.2 NM to RW03				
RW03				
9 NM 2.4 NM 3.6 NM 1.6 NM 2.2 NM				
CATEGORY	A	B	C	D
LNAV MDA	6500-1 743 (800-1)	6500-1¼ 743 (800-1¼)	6500-2 743 (800-2)	
CIRCLING	6500-1 738 (800-1)	6500-1¼ 738 (800-1¼)	6500-2 738 (800-2)	6560-2½ 798 (800-2½)

