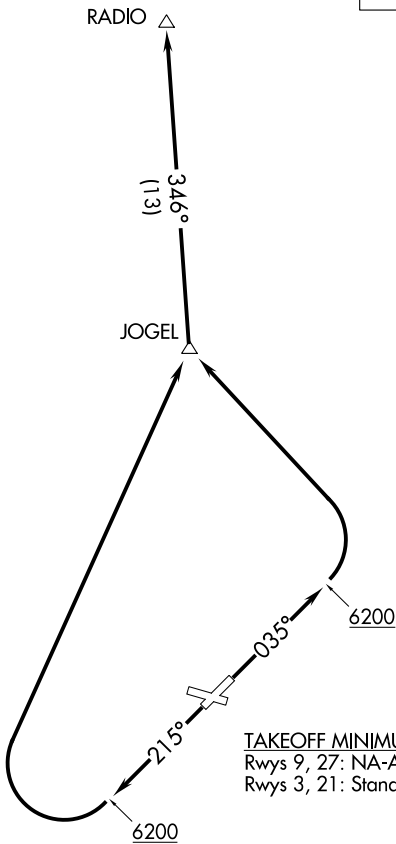


TRINIDAD ONE DEPARTURE (OBSTACLE) (RNAV)

DENVER CENTER
128.375

**TOP ALTITUDE:
ASSIGNED BY ATC**



NOTE: GPS required.

NOTE: RNAV-1.

TAKEOFF OBSTACLE NOTES

Rwy 3: Multiple trees beginning 46' from DER, left and right of centerline, up to 15' AGL/5744' MSL.

NOTE: Chart not to scale.

DEPARTURE ROUTE DESCRIPTION

TAKEOFF RUNWAY 3: Climb heading 035° to 6200, then climbing left turn to 10000 direct JOGEL and on track 346° to RADIO.

TAKEOFF RUNWAY 21: Climb heading 215° to 6200, then climbing right turn to 10000 direct JOGEL and on track 346° to RADIO.

LOST COMMUNICATIONS:

If not in contact with Denver ARTCC at 10000 or assigned altitude if lower, continue climb to assigned altitude and thence on assigned route.