

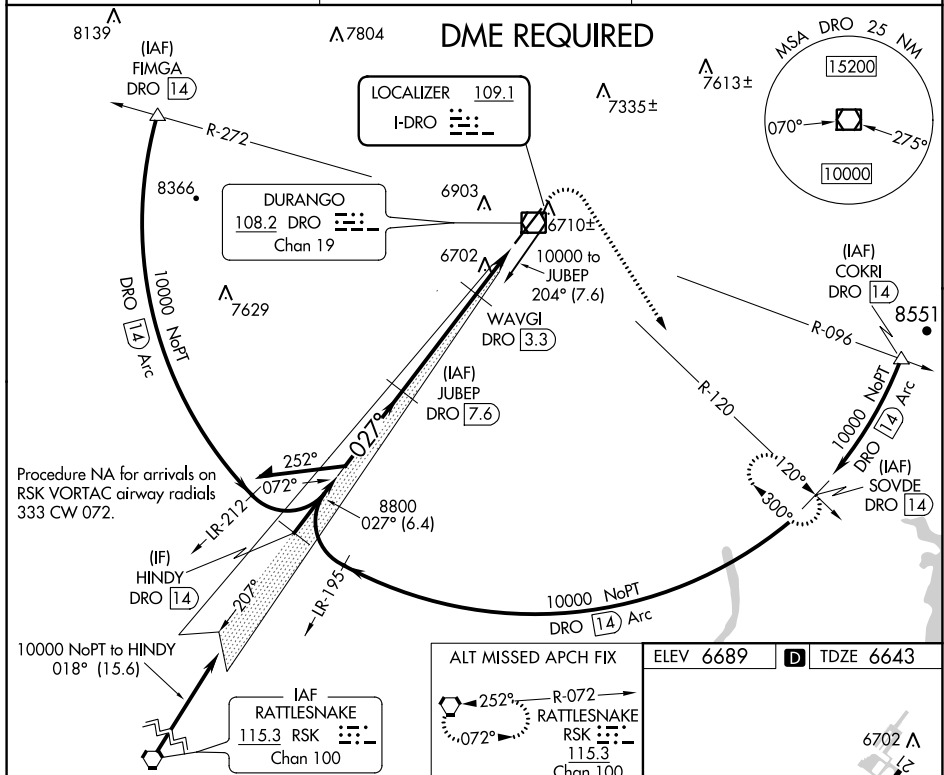
ILS or LOC/DME RWY 3  
DURANGO-LA PLATA COUNTY (DRO)

DME required. DME from DRO VOR/DME. Simultaneous reception of I-DRO and DRO VOR/DME required. For inop MALSR, increase S-LOC 3 Cat C/D visibility to  $\frac{7}{8}$  mile.

MALSR

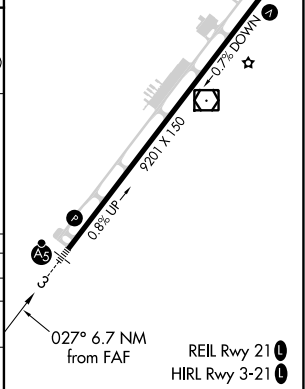
**MISSED APPROACH:** Climb to 7500 then climbing right turn to 10000 on heading 140° and on DRO VOR/DME R-120 to SOVDE/DRO 14 DME and hold.

ASOS <b>120.625</b>	DENVER CENTER <b>118.575 348.7</b>	UNICOM <b>122.8 (CTAF) 0</b>
------------------------	---------------------------------------	---------------------------------



**CIRCLING**

CATEGORY	A	B	C	D
S-ILS 3		6843-½	200 (200-½)	
S-LOC 3		6960-½	317 (300-½)	
<b>C</b> CIRCLING	7160-1 471 (500-1)	7220-1 531 (600-1)	7540-2½ 851 (900-2½)	8140-3 1451 (1500-3)



SW-1, 03 DEC 2020 to 31 DEC 2020