

APP CRS  
**210°**

Rwy Idg  
**9201**

TDZE  
**6689**

Apt Elev  
**6689**

RNAV (GPS) RWY 21

DURANGO-LA PLATA COUNTY (DRO)

RNP APCH.

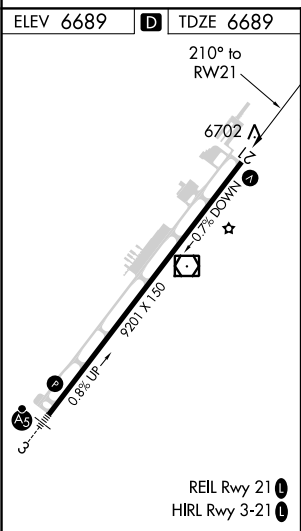
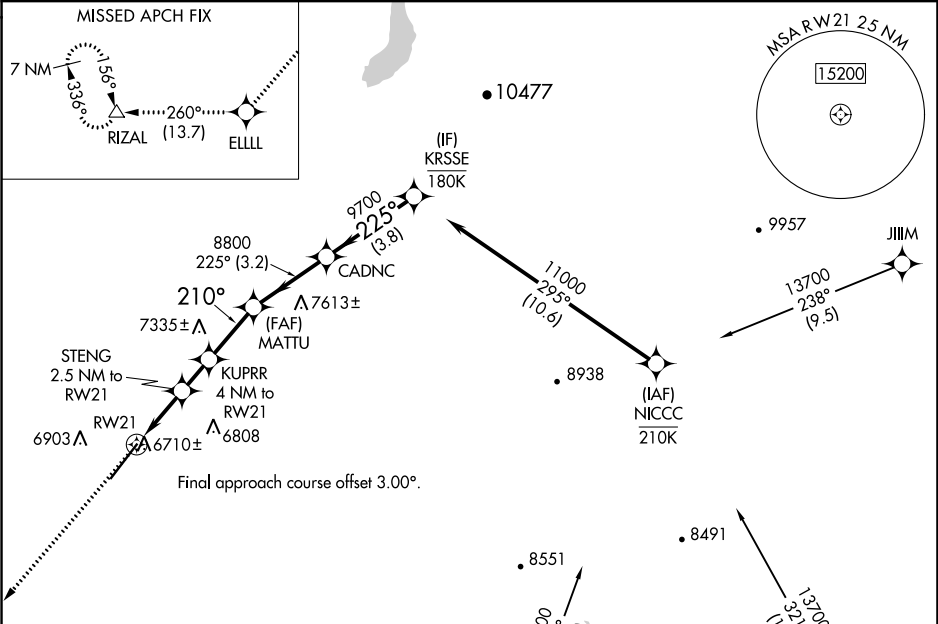
▼

⚠

Rwy 21 helicopter visibility reduction below ¾ SM NA. For uncompensated Baro-VNAV systems, LNAV/VNAV NA below -20°C or above 54°C.

MISSED APPROACH: Climb to 11000 direct ELLLL and on track 260° to RIZAL and hold.

ASOS <b>120.625</b>	DENVER CENTER <b>118.575 348.7</b>	UNICOM <b>122.8 (CTAF) 0</b>
------------------------	---------------------------------------	---------------------------------



11000 ↑	ELLLL ✱	tr 260° △	RIZAL						
*LNAV only									
				STENG 2.5 NM to RW21	KUPRR 4 NM to RW21	MATTU 8800	CADNC	KRSSE	11000
				*1.2 NM to RW21		210° ✱	225°		
				7540*	8000*	8800	9700		
				1.2 NM	1.3 NM	1.5 NM	2.5 NM	3.2 NM	3.8 NM
CATEGORY		A		B		C		D	
LNAV/ VNAV		DA		7019-1 330 (400-1)					
LNAV MDA		7120-1 431 (500-1)		7120-1¼ 431 (500-1¼)					
7160-1 471 (500-1)		7220-1 531 (600-1)		7540-2½ 851 (900-2½)				8140-3 1451 (1500-3)	
CIRCLING									