

WAAS CH 70714 W23A	APP CRS 233°	Rwy Idg TDZE Apt Elev	6376 5504 5506
--	------------------------	-----------------------------	---

RNAV (GPS) RWY 23

FOUR CORNERS RGNL (FMN)

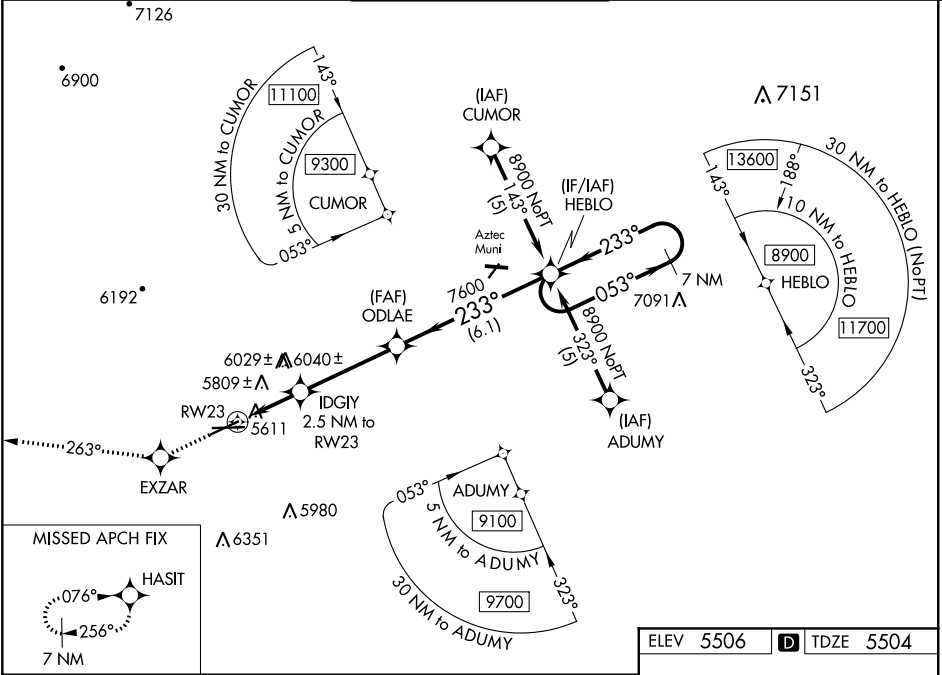
▼

▲

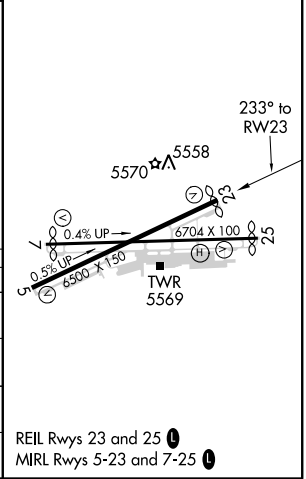
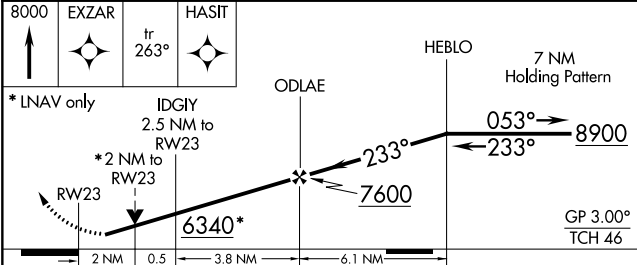
For uncompensated Baro-VNAV systems, LNAV/VNAV NA below -26°C (-14°F) or above 38°C (100°F). Circling NA Cat D southeast of Rwy 5 and 25. DME/DME RNP-0.3 NA. Visibility reduction by helicopters NA.

MISSED APPROACH: Climb to 8000 direct EXZAR and via track 263° to HASIT and hold.

ATIS 127.15	DENVER CENTER 118.575 348.7	FARMINGTON TOWER★ 118.9 (CTAF) 257.8	GND CON 121.7	UNICOM 122.95
-----------------------	---------------------------------------	--	-------------------------	-------------------------



ELEV 5506	D	TDZE 5504
-----------	---	-----------



CATEGORY	A	B	C	D
LPV DA	5798-1	294 (300-1)		
LNAV/VNAV DA	6138-2 ¼	634 (700-2 ¼)		
LNAV MDA	6180-1 676 (700-1)	6180-2 676 (700-2)	6180-2 ¼ 676 (700-2 ¼)	
CIRCLING	6180-1 674 (700-1)	6180-2 674 (700-2)	6180-2 ¼ 674 (700-2 ¼)	