

WAAS CH 97518 W25A	APP CRS 256°	Rwy Idg 6277 TDZE 5506 Apt Elev 5506
--	------------------------	---

RNAV (GPS) RWY 25

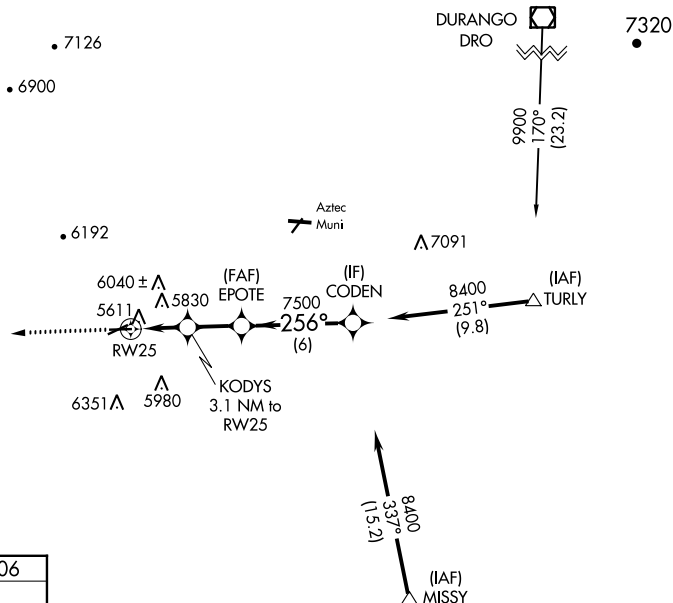
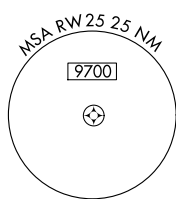
FOUR CORNERS RGNL (FMN)

T Baro-VNAV NA when using Durango-La Plata County, CO altimeter setting. For uncompensated Baro-VNAV systems, UNAV/DURANGO NA below -26°C (-14°F) or above 38°C (100°F).

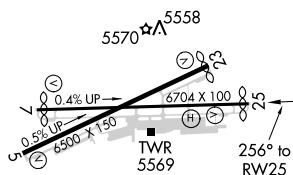
A DME/DME RNP 0.3 NA. Cat. D Circling NA SE of Rwy 5 and 25. When local altimeter setting not received, use Durango-La Plata County, CO altimeter setting and increase all DA 243 feet and all MDA 260 feet. Increase LPV visibility $\frac{3}{4}$ mile all Cts., UNAV/DURANGO visibility 1 mile all Cts., UNAV and Circling visibility Cts. A-B $\frac{1}{4}$ mile, Cts. C-D visibility 1 mile. VDP NA with Durango-La Plata County, CO altimeter setting.

MISSED APPROACH:
Climb to 8000 direct
HASIT and hold.

ATIS 127.15	DENVER CENTER 118.575 348.7	FARMINGTON TOWER * 118.9 (CTAF) 0 257.8	GND CON 121.7	UNICOM 122.95
----------------	--------------------------------	--	------------------	------------------



ELEV 5506	D	TDZE 5506
-----------	----------	-----------



REIL Rwys 23 and 25 **L**
MIRL Rwys 5-23 and 7-25 **L**

Diagram illustrating the VGSB VOR/DME station layout and associated navigation data:

- VGSB VOR/DME** (VGSB Angle 3.00/TCH 52)
- 8000** (Distance from RW25 to VGSB VOR/DME)
- HASIT** (VGSB VOR/DME)
- *RNAV only**
- RW25** (Runway 25)
- *1.9 NM to RW25**
- KODYS 3.1 NM to RW25**
- EPOTE 7500**
- 256°** (Bearing from EPOTE to CODEN)
- 7500** (Distance from EPOTE to CODEN)
- 8400** (Distance from EPOTE to CODEN)
- Procedure Turn NA**
- GP 3.00° TCH 58**

CATEGORY	A	B	C	D
LPV DA	5706-34	200 (200-34)		
RNAV/VNAV DA	6068-2	562 (600-2)		
RNAV MDA	6160-1	654 (700-1)	6160-134 654 (700-134)	6160-2 654 (700-2)
CIRCLING	6160-1	654 (700-1)	6160-134 654 (700-134)	6160-2 654 (700-2)