

WAAS CH 90110 W07A	APP CRS 076°	Rwy Idg TDZE 5502 Apt Elev 5506
---------------------------------	------------------------	---

RNAV (GPS) RWY 7

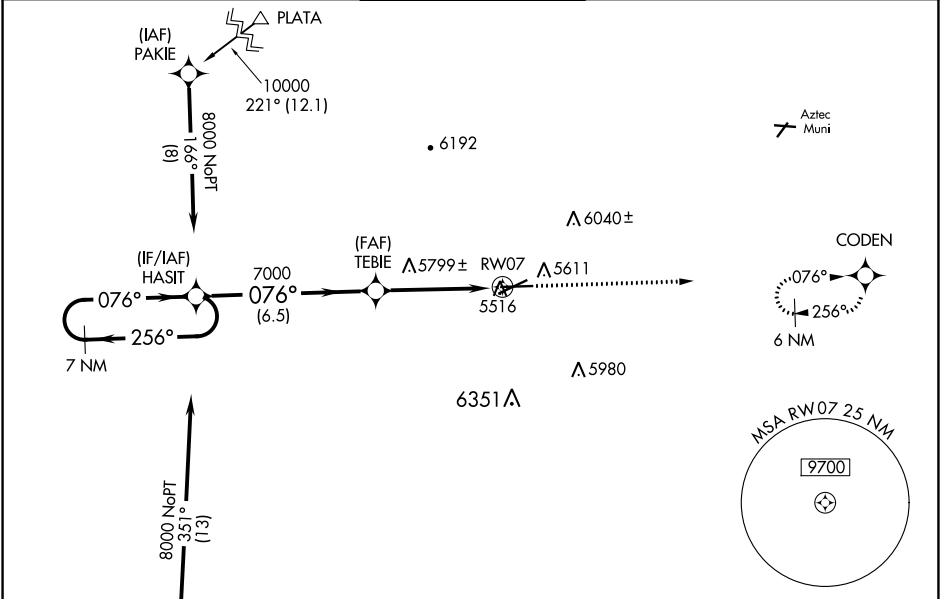
FOUR CORNERS RGNL (FMN)

⚠

Cat D Circling not authorized southeast of Rwys 5 and 25.
Baro-VNAV NA below -26°C (-14°F). DME/DME RNP-0.3 NA.
If local altimeter setting not received, use Durango-La Plata County, CO
altimeter setting and increase all DAs/MDAs 260 feet.

MISSED APPROACH: Climb to
8300 direct CODEN and hold.

ATIS 121.15	DENVER CENTER 118.575 348.7	FARMINGTON TOWER★ 118.9 (CTAF) 0 257.8	GND CON 121.7	UNICOM 122.95
-----------------------	---------------------------------------	---	-------------------------	-------------------------



ELEV 5506 **D** TDZE 5502

7 NM Holding Pattern

8000

GP 3.00° TCH 52

HASIT

TEBIE

RW07

8300

CODEN

*LNAV only

↑ VDP and Baro/VNAV NA when using Durango-La Plata County, CO altimeter setting.

↑ *1.7 NM to RW07

6.5 NM

2.9 NM

1.7 NM

CATEGORY	A	B	C	D
LPV DA	5760-1 258 (300-1)			
LNAV/VNAV DA	5980-1¼ 478 (500-1¼)			
LNAV MDA	6060-1	558 (600-1)	6060-1½ 558 (600-1½)	6060-1¾ 558 (600-1¾)
CIRCLING	6060-1¾ 554 (600-1¾)	6120-1¾ 614 (700-1¾)	6160-1¾ 654 (700-1¾)	6160-2 654 (700-2)

0.5% UP

0.4% UP

0.4% UP

6500 X 150

6704 X 100

TWR 5569

5570

5558

076° to RW07

REIL Rwys 23 and 25 **0**
MIRL Rwys 5-23 and 7-25 **0**