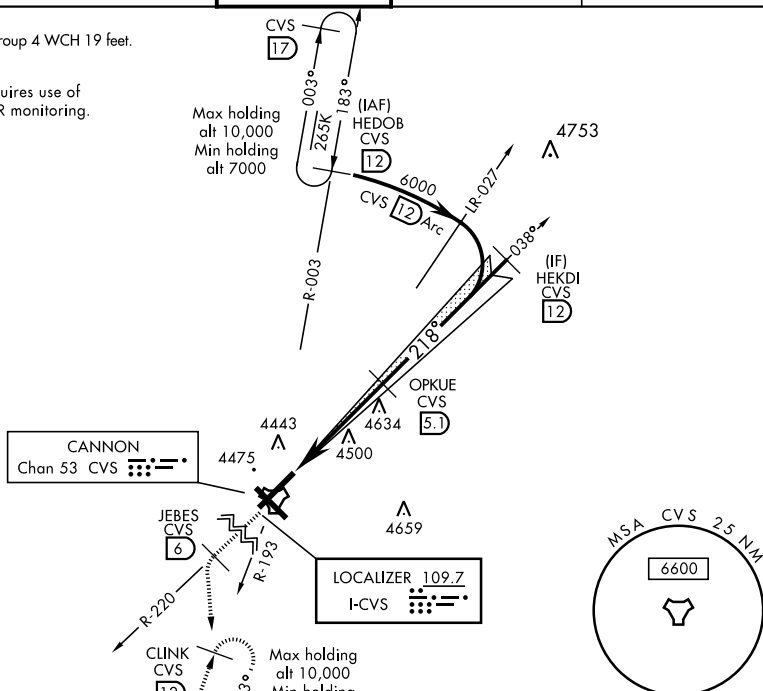


ILS or LOC RWY 22

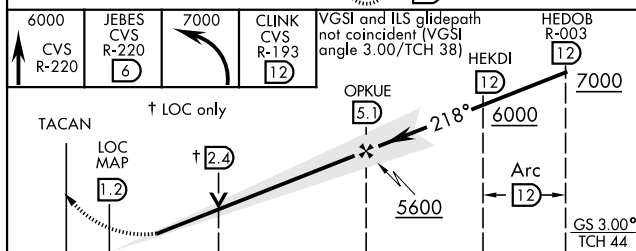
LOC I-CVS 109.7	APCH CRS 218°	Rwy Idg 10,003 TDZE 4295 Arpt Elev 4295	AL-512 [USAF]	CANNON AFB (KCVS)	
<p>▼ * When ALS inop, increase RVR to 40 and vis to $\frac{3}{4}$ miles. ** When ALS inop, increase CAT AB RVR to 55 and vis to 1 mile, CAT CDE vis to $1\frac{1}{2}$ miles.</p>			ALSF-1 	MISSED APPROACH: Climb to 6000 out CVS TACAN R-220 to 6 DME (JEBES) then turn left climbing to 7000 intercept CVS R-193 to 12 DME (CLNCK) and hold.	
ATIS 119.1 269.9	CANNON APP CON 118.425 352.1	CANNON TOWER 120.4 270.25	GND CON 121.9 275.8	CLNC DEL 120.2 293.225	


CAUTION:
1. ILS Rwy 22 Height Group 4 WCH 19 feet.

Missed approach requires use of RNAV or ATC RADAR monitoring.



EMERG SAFE ALT 100 NM 8000



CATEGORY	A	B	C	D	E
S-LS 22 *	4495/24		200	(200-½)	
S-LOC 22 **	4720/24	425 (500-½)	4720/40 425 (500-¾)		
 CIRCLING	4840-1	545 (600-1)	4860-1 ½ 565 (600-1½)	5000-2¼ 705 (800-2¼)	5020-2½ 725 (800-2½)

[illegible]