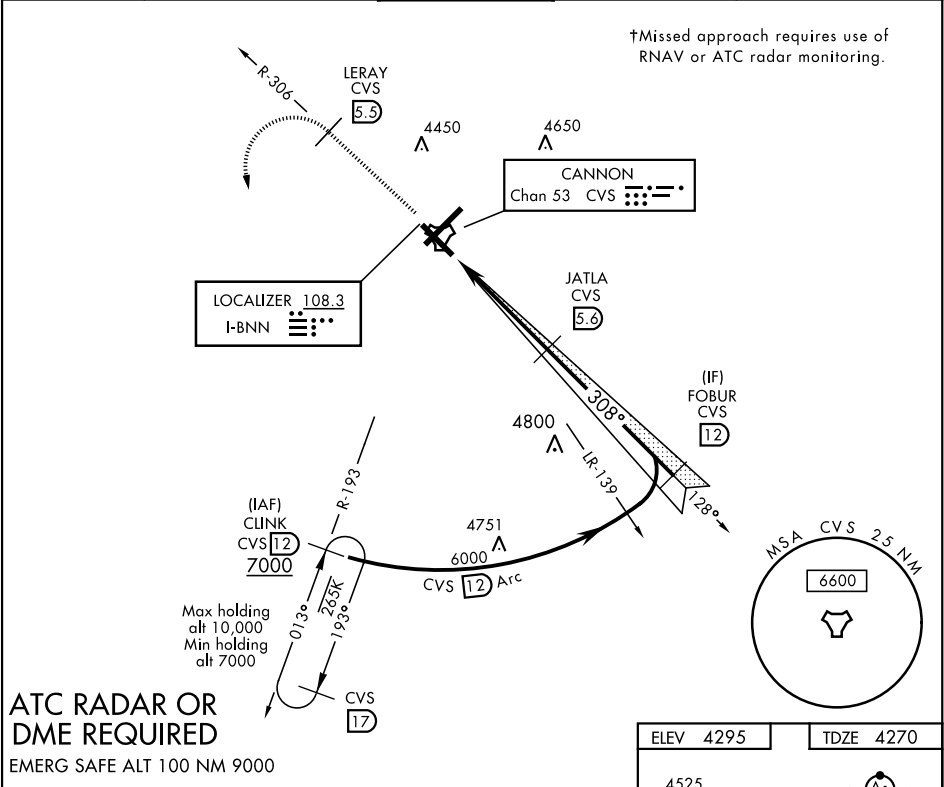


ILS or LOC RWY 31

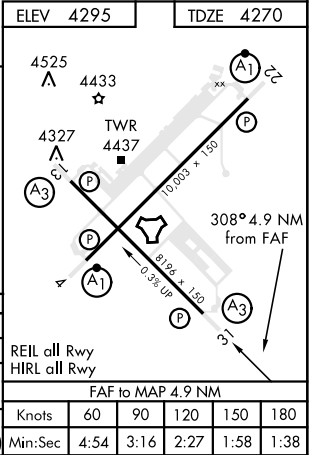
LOC I-BNN <b>108.3</b>	APCH CRS <b>308°</b>	Rwy Idg <b>8196</b> TDZE <b>4270</b> Arprt Elev <b>4295</b>	AL-512 [USAF]	CANNON AFB (KCVS)
* When ALS inop, increase CAT ABCDE vis to ¾ mile. ** When ALS inop, increase CAT AB vis to 1 mile, CAT CDE vis to 1 ½ miles.			SSALR (A3)	† MISSED APPROACH: Climb to 6000 out CVS TACAN R-306 to 5.5 DME (LERAY) then turn left climbing to 7000 intercept CVS R-193 to 12 DME (CLINK) and hold.
ATIS <b>119.1 269.9</b>	CANNON APP CON <b>118.425 352.1</b>	CANNON TOWER <b>120.4 270.25</b>	GND CON <b>121.9 275.8</b>	CLNC DEL <b>120.2 293.225</b>



ATC RADAR OR  
DME REQUIRED

EMERG SAFE ALT 100 NM 9000

6000 ↑	LERAY CVS R-306 5.5	7000 ↖	CLINK CVS R-193 12	VGSI TCH (41') and the procedure TCH (51') is greater than 3'.	
<p>TACAN</p> <p>JATLA 5.6</p> <p>308°</p> <p>6000</p> <p>4.9 NM</p> <p>GS 3.00° TCH 51'</p> <p>FOBUR 12</p>					
CATEGORY	A	B	C	D	E
S-ILS 31 *	4470-½		200	(200-½)	
S-LOC 31 **	4660-½ 390 (400-½)		4660-5% 390 (400-5%)		
CIRCLING	4840-1 545 (600-1)		4860-1½ 565 (600-1½)	5000-2¼ 705 (800-2¼)	5020-2½ 725 (800-2½)



SW-1, 03 DEC 2020 to 31 DEC 2020

SW-1, 03 DEC 2020 to 31 DEC 2020