


CLOVIS, NEW MEXICO

TACAN RWY 4

TACAN CVS Chan 53	APCH CRS 048°	Rwy ldg TDZE Arprt Elev	10,003 4284 4295
----------------------	------------------	-------------------------------	------------------------

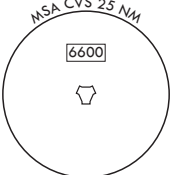
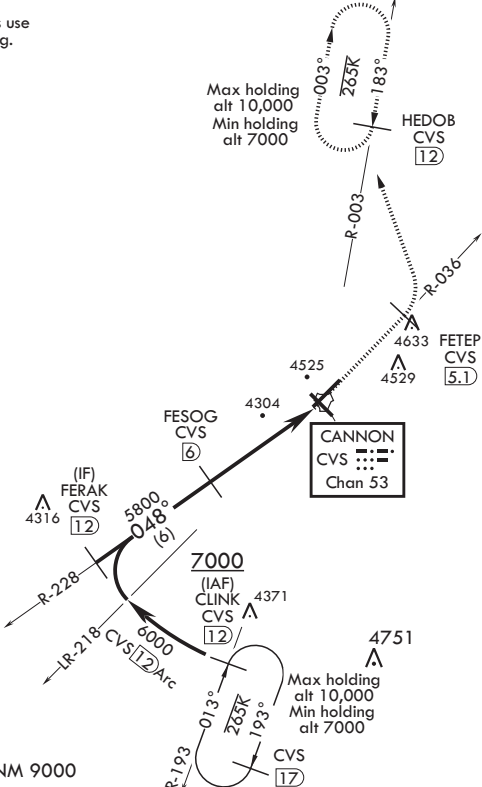
AL-512 (USAF)

CANNON AFB (KCVS)

<b>▼</b> * When ALS inop, increase CAT AB RVR to 55, vis to 1 mile; CAT CDE RVR to 60, vis to 1 1/8 miles.	ALSF-1 	MISSED APPROACH: Climb to 6000 via CVS TACAN R-036 to 5.1 DME (FETEP), cross FETEP at or below 6000, then turn left climbing to 7000 to intercept CVS TACAN R-003 to 12 DME (HEDOB) and hold.
--	---	---

ATIS 119.1 269.9	CANNON APP CON 118.425 352.1	TOWER 120.4 270.25	GND CON 121.9 275.8	CLNC DEL 120.2 293.225
---------------------	---------------------------------	-----------------------	------------------------	---------------------------

4741  
Missed approach requires use of RNAV or ATC monitoring.



EMERG SAFE ALT 100 NM 9000

CLINK R-193 12		FERAK R-228 12		6000 ↑ CVS R-036		FETEP CVS 5.1 6000		7000 ↶ CVS R-003		HEDOB CVS 12		ELEV 4295 HIRL all Rwys REIL all Rwys		TDZE 4284	
7000		6000		FESOG 6		TACAN		MINRE 5							
2.57° TCH 41		12 Arc		048°		5800		2		5.5 NM					
CATEGORY		A		B		C		D		E					
S-4*		4700/24		416 (500-½)		4700/40		416		(500-¾)					
CIRCLING		4840-1		545 (600-1)		4860-1½ 565 (600-1½)		5000-2¼ 705 (800-2¼)		5020-2½ 725 (800-2½)					

BCN 4433

TWR 4437

10,003 x 150

8,170 x 150

0.3% DOWN

048° 5.6NM from FAF

A1, A3, P, C

CLOVIS, NEW MEXICO

34°23'N - 103°19'W

CANNON AFB (KCVS)

Amdt 3 10OCT19

TACAN RWY 4

SW-1, 03 DEC 2020 to 31 DEC 2020

SW-1, 03 DEC 2020 to 31 DEC 2020