

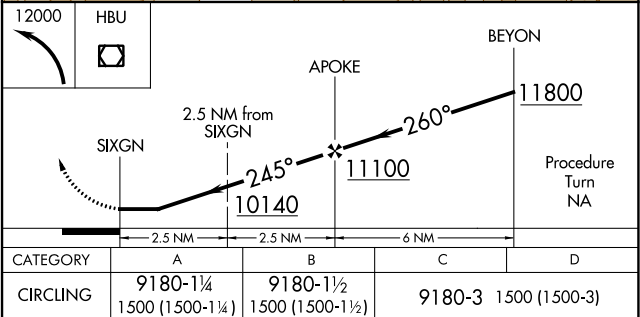
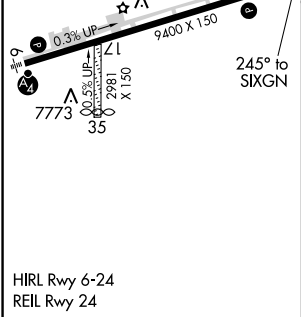
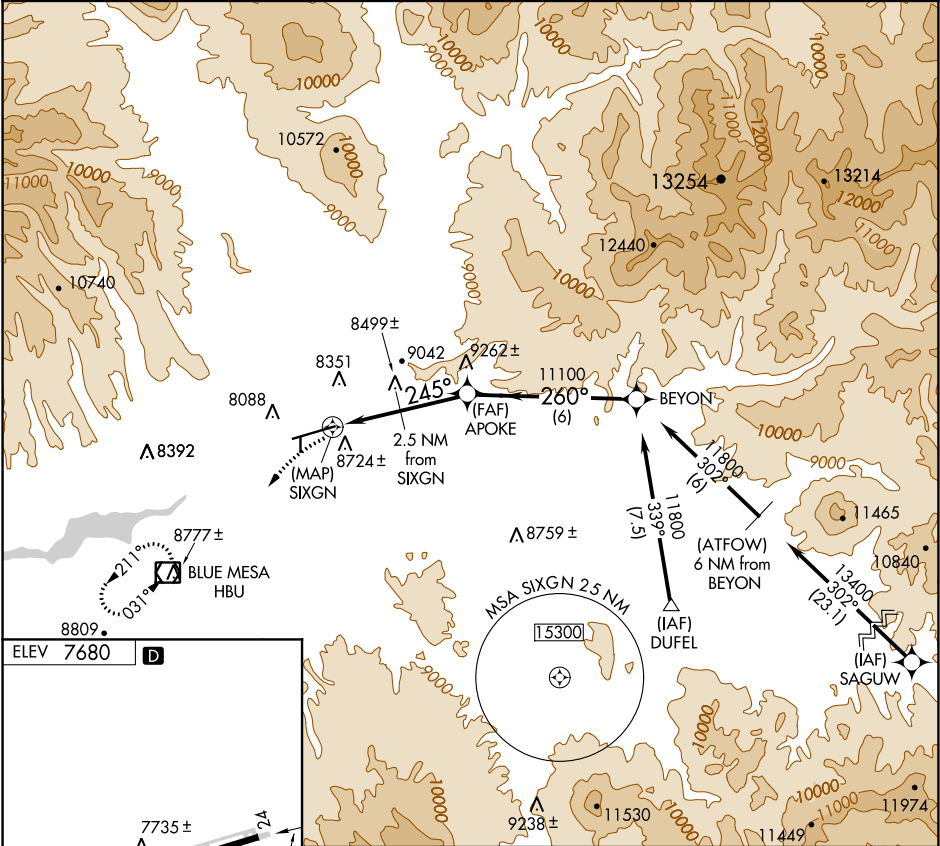
APP CRS	Rwy Idg	N/A
245°	TDZE	N/A
	Apt Elev	7680

GPS-B

GUNNISON-CRESTED BUTTE RGNL (GUC)

NA -26°C	Procedure not authorized when airport closed except by prior arrangement. DME/DME RNP-0.3 NA.	MISSED APPROACH: Climbing left turn to 12000 direct HBU VOR/DME and hold.
-------------	--	---

AWOS-3PT 135.075	DENVER CENTER 124.5 350.25	UNICOM 122.7 (CTAF) 0
---------------------	-------------------------------	--------------------------



SW-1, 03 DEC 2020 to 31 DEC 2020

SW-1, 03 DEC 2020 to 31 DEC 2020