

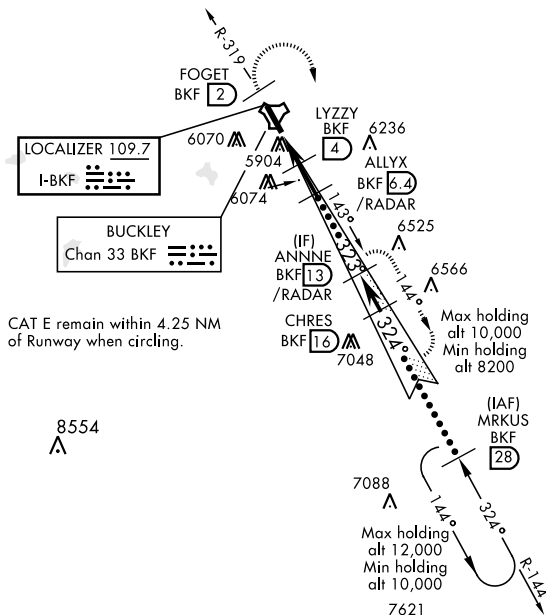
HI-ILS or LOC/DME RWY 32

LOC I-BKF 109.7	APCH CRS 323°	Rwy ldg 11,006 TDZE 5663 Arpt Elev 5663	JAL-538 [USAF]	BUCKLEY AFB (KBKF)
---------------------------	-------------------------	--	----------------	--------------------

<p>★ When ALS inop, increase CAT CDE RVR to 40 and vis to $\frac{3}{4}$ miles.</p> <p>★★ When ALS inop, increase CAT CDE vis to $1\frac{3}{4}$ miles.</p>	<p>ALSF-1</p> <p>(A1)</p>	<p>MISSED APPROACH: Climb on BKF TACAN R-319 to FOGET, then climbing right turn to 8200 and intercept BKF R-144 to ANNNE and hold or as directed by ATC.</p>
---	---------------------------	--

ATIS ★ 119.675 259.3	DENVER APP CON 128.45 251.075	BUCKLEY TOWER ★ 121.0 291.675	GND CON 121.6 275.8	CLNC DEL 121.6 275.8
--------------------------------	---	---	-------------------------------	--------------------------------

*** Circling not authorized E of Rwy 14-32 Missed approach requires use of RNAV or ATC RADAR monitoring.



EMERG SAFE ALT 100 NM 16,500

HI-ILS or LOC/DME RWY 32