

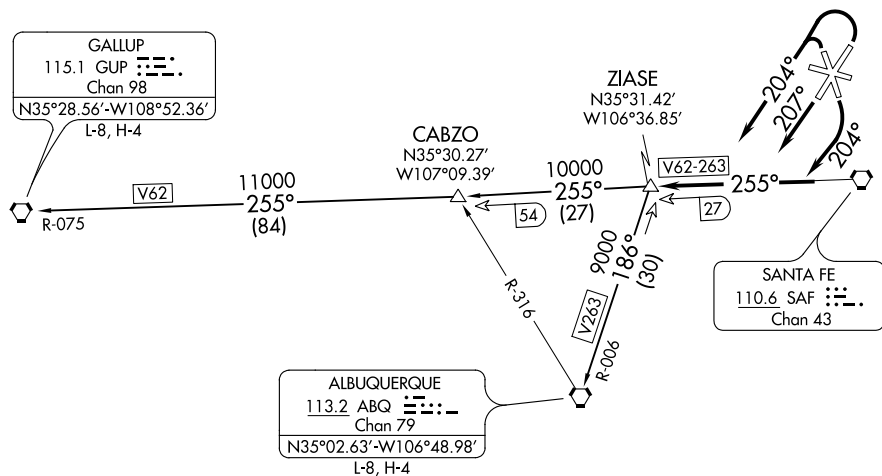
ATIS 128.55  
GND CON  
121.7  
SANTA FE TOWER★  
119.5 (CTAF) 239.3  
ALBUQUERQUE CENTER  
132.8 346.35

CAUTION: Mountainous terrain all quadrants.

**TOP ALTITUDE:  
ASSIGNED BY ATC**

## TAKEOFF MINIMUMS

Rwy 2: Standard with minimum climb of 235' per NM to 8200.  
Rwy 33: Standard with minimum climb of 310' per NM to 8200.



NOTE: Chart not to scale.

## DEPARTURE ROUTE DESCRIPTION

TAKEOFF RUNWAYS 2, 33: Climbing left turn heading 204° thence. . . .

TAKEOFF RUNWAY 15: Climbing right turn heading 204° thence. . . .

**TAKEOFF RUNWAY 20:** Climb heading 207° thence. . . .

... intercept and proceed on SAF R-255 to ZIASE INT, then on (transition) or (assigned route).

ALBUQUERQUE TRANSITION (ZIASE4.ABQ): From over ZIASE INT on ABQ R-006 to ABQ VORTAC.

GALLUP TRANSITION (ZIASE4.GUP): From over ZIASE INT on SAF R-255 and GUP R-075 to GUP VORTAC.