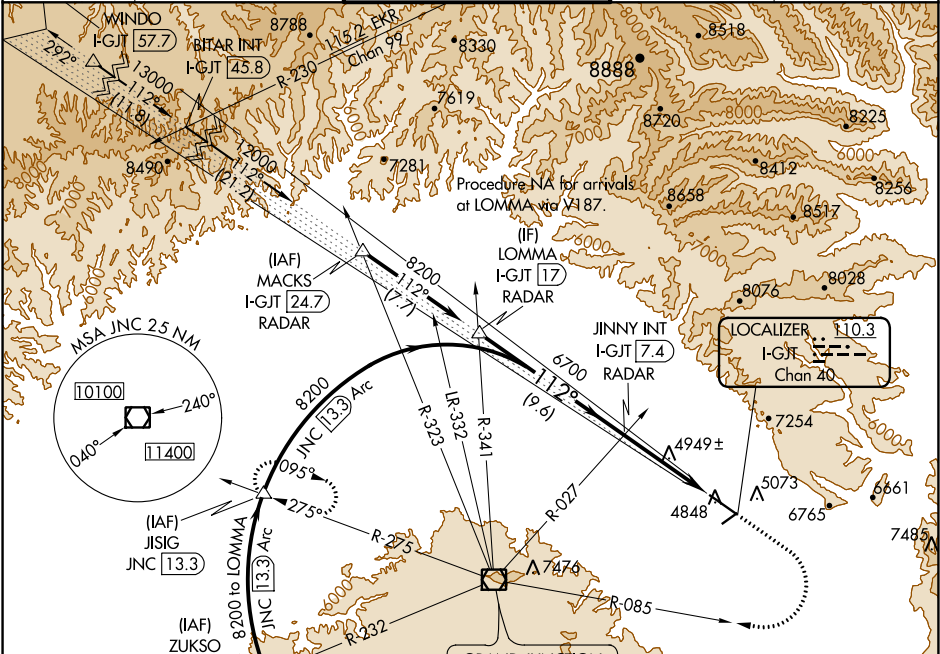


LOC/DME I-GJT <b>110.3</b> Chan <b>40</b>	APP CRS <b>112°</b>	Rwy Idg <b>10503</b> TDZE <b>4833</b> Apt Elev <b>4858</b>
-------------------------------------------------	------------------------	------------------------------------------------------------------

ILS or LOC RWY 11  
GRAND JUNCTION RGNL (GJT)

DME required.	MALSR	MISSED APPROACH: Climb to 6700 then climbing right turn to 9000 via JNC VOR/DME R-085 to JNC VOR/DME then via JNC VOR/DME R-275 to JISIG/JNC 13.3 DME and hold.
▼ ▲ For inop ALS, increase S-LOC 11 Cats C and D visibility to RVR 5500. * RVR 1800 authorized with the use of FD or AP or HUD to DA.		

ATIS <b>118.55</b>	DENVER APP CON ★ <b>119.7 317.4</b>	GRAND JUNCTION TOWER ★ <b>118.1 (CTAF) 0 257.8</b>	GND CON <b>121.7 257.8</b>	UNICOM <b>122.95</b>
-----------------------	----------------------------------------	-------------------------------------------------------	-------------------------------	-------------------------



Use I-GJT DME when on the localizer course.	LOMMA I-GJT [17] RADAR	Procedure Turn NA	JINNY INT I-GJT [7.4] RADAR	JNC R-085	JNC R-275	JISIG
8200	6700	9000	JNC	JNC	JISIG	
GS 3.00° TCH 50	112°	6700	VGSi and ILS glidepath not coincident (VGSi Angle 3.00°/TCH 51).	# I-GJT [2.9]	I-GJT [1.8]	# LOC only
9.6 NM	4.5 NM	1.1 NM				
CATEGORY	A	B	C	D		
S-ILS 11	*5033/24 200 (200-½)					
S-LOC 11	5200/24	367 (400-½)	5200/35 367 (400-¾)	5200/40 367 (400-¾)		
CIRCLING	5360-1 502 (600-1)	5420-1 562 (600-1)	5440-1½ 582 (600-1½)	5540-2¼ 682 (700-2¼)		
GRAND JUNCTION, COLORADO Amdt 16D 03JAN19						

ELEV 4858	TDZE 4833
112° 5.7 NM from FAF	0.4% UP
0.3% DOWN	1.3% UP
TWR 4945	5501 x 75
HIRL Rwy 11-29	MIRL Rwy 4-22
REIL Rwy 4, 22 and 29	FAF to MAP 5.7 NM
Knots	60 90 120 150 180
Min:Sec	5:42 3:48 2:51 2:17 1:54