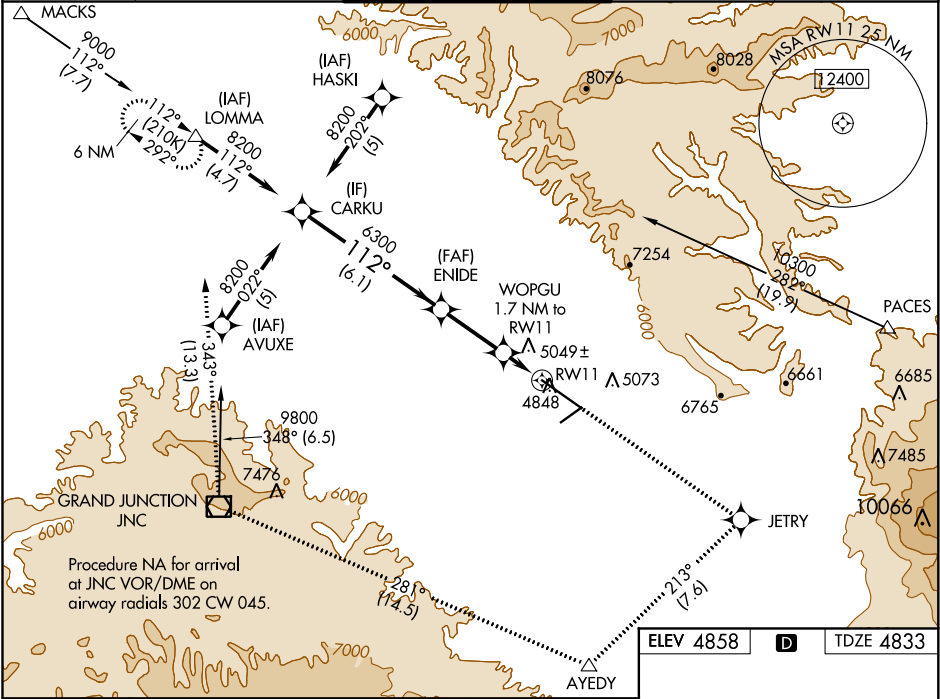


WAAS CH 97514 W11A	APP CRS 112°	Rwy Idg 10503 TDZE 4833 Apt Elev 4858
--	------------------------	--

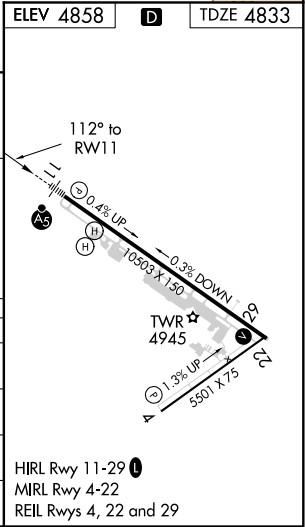
RNAV (GPS) Y RWY 11
GRAND JUNCTION RGNL (GJT)

RNP APCH. ▼ For uncompensated Baro-VNAV systems, LNAV/VNAV NA below -24°C (-11°F) or above 39°C (102°F). ▲ When local altimeter setting not received, procedure NA. # RVR 1800 authorized with use of FD or AP or HUD to DA.	MALSR AS	MISSED APPROACH: Climb to 6700 direct JETRY then climbing right turn to 9000 on track 213° to AYEDY and on track 281° to JNC VOR/DME and on track 343° to LOMMA and hold.
---	-------------	---

ATIS 118.55	DENVER APP CON ★ 119.7 317.4	GRAND JUNCTION TOWER ★ 118.1 (CTAF) 0 257.8	GND CON 121.7 257.8	UNICOM 122.95
-----------------------	--	---	-------------------------------	-------------------------



	6700	JETRY	9000	AYEDY	JNC	LOMMA
	↑	✱	↶	△	fr 281°	fr 343°
CARKU	8200	ENIDE	WOPGU 1.7 NM to RW11			
GP 3.00° TCH 50	6300	*5400				
VGSI and RNAV glidepath not coincident (VGSI Angle 3.00/TCH 51).						
	← 6.1 NM	← 2.7 NM	← 1.7 NM			
CATEGORY	A	B	C	D		
LPV DA #	5033/24 200 (200-½)					
LNAV/VNAV DA	5492-1¾ 659 (700-1¾)					
LNAV MDA	5300/24	467 (500-½)	5300/50	467 (500-1)		
CIRCLING	5360-1 502 (600-1)	5420-1 562 (600-1)	5440-1½ 582 (600-1½)	5540-2¼ 682 (700-2¼)		



SW-1, 03 DEC 2020 to 31 DEC 2020

SW-1, 03 DEC 2020 to 31 DEC 2020