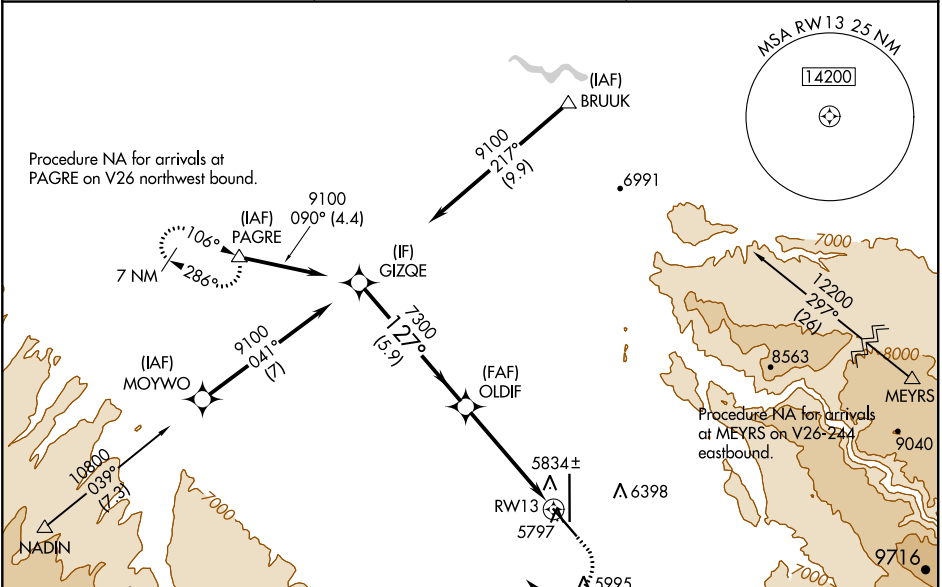


WAAS CH 97344 W13A	APP CRS 127°	Rwy Idg TDZE Apt Elev	7510 5723 5759
--	------------------------	-----------------------------	---

RNAV (GPS) RWY 13
MONTROSE RGNL (MTJ)

RNP APCH. Circling NA east of Rwy 17 and northeast of Rwy 31. Circling Rwy 31 NA at night. Rwy 13 helicopter visibility reduction below 1 SM NA. For uncompensated Baro-VNAV systems, LNAV/VNAV NA below -19°C or above 54°C. Straight-in/Circling Rwy 13 at night, operational VGSI required, remain on or above VGSI glidepath until threshold.	MISSED APPROACH: (Do not exceed 200K until PAGRE) Climb to 6300 then climbing right turn to 11000 direct PAGRE and hold, continue climb-in-hold to 11000.
--	---

ASOS 135.225	DENVER CENTER 127.1 343.65	UNICOM 122.8 (CTAF) 0
------------------------	--------------------------------------	---------------------------------



Procedure NA for arrivals at NADIN on V244 westbound.

ELEV 5759					D					TDZE 5723				
A6264														
VGSI and RNAV glidepath not coincident (VGSI Angle 3.00/TCH 43).														
GIZQE										PAGRE				
9100										6300				
127°										11000				
7300										△				
GP 3.00° TCH 55														
5.9 NM										4.9 NM				
RW13														
CATEGORY										A B C D				
LPV DA										5973-1 250 (300-1)				
LNAV/VNAV DA										6101-1 378 (400-1)				
LNAV MDA										6160-1 437 (500-1) 6160-1¼ 437 (500-1¼)				
CIRCLING										6280-1 521 (600-1) 6320-1 561 (600-1) 6380-1¾ 621 (700-1¾) 6800-3 1041 (1100-3)				
REIL Rwy 13, 31 and 35										HIRL Rwy 13-31 and 17-35				

127° to RW13

10000 X 150

0.5% UP

0.3% DOWN

35

7510 X 100

5807

CG 0.8% UP