

## SILVER CITY TWO DEPARTURE (OBSTACLE)

SL-793 (FAA)

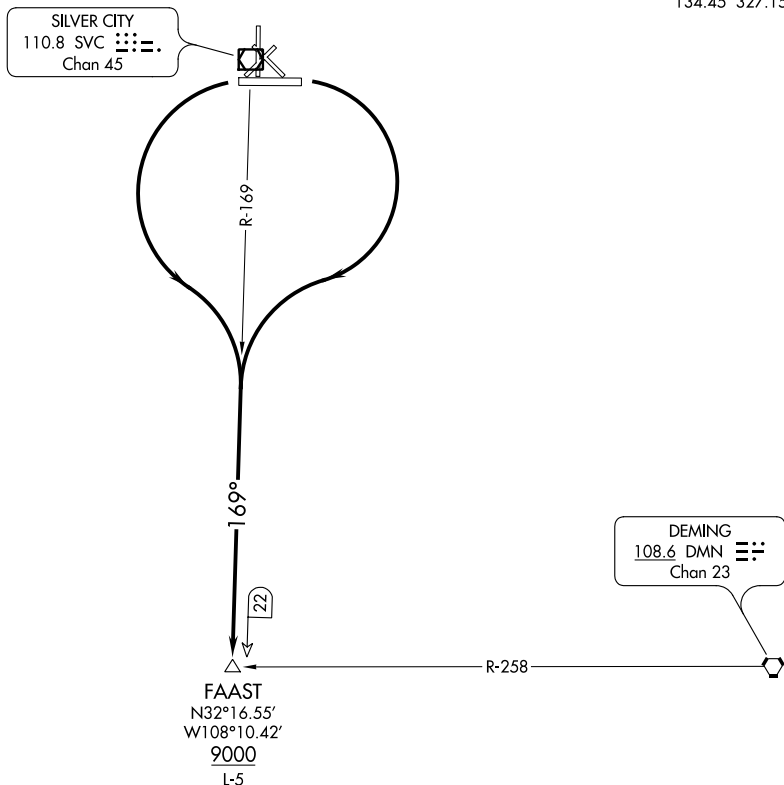
GRANT COUNTY (SVC)  
SILVER CITY, NEW MEXICO

AWOS-3

126.725

ALBUQUERQUE CENTER

134.45 327.15



## TAKEOFF MINIMUMS

Rwys 3, 12, 17, 21, 30, 35: NA-Environmental.

Rwys 8, 26: Standard.

## TAKEOFF OBSTACLE NOTES

Rwy 8: Vegetation beginning 225' from DER, 436' left of centerline, 13' AGL/5390' MSL.

Rwy 26: Trees beginning 45' from DER, 452' left of centerline, up to 8' AGL/5390' MSL.

NOTE: Chart not to scale.

## DEPARTURE ROUTE DESCRIPTION

TAKEOFF RUNWAY 8: Climbing right turn to intercept the SVC VOR/DME R-169 to FAAST.  
Cross FAAST at or above 9000 before proceeding on course.

**TAKEOFF RUNWAY 26:** Climbing left turn to intercept the SVC VOR/DME R-169 to FFAST. Cross FFAST at or above 9000 before proceeding on course.

## SILVER CITY TWO DEPARTURE (OBSTACLE)

(SVC2.SVC) 05JAN17

SILVER CITY, NEW MEXICO  
GRANT COUNTY (SVC)

SW-1, 03 DEC 2020 to 31 DEC 2020

SW-1, 03 DEC 2020 to 31 DEC 2020