

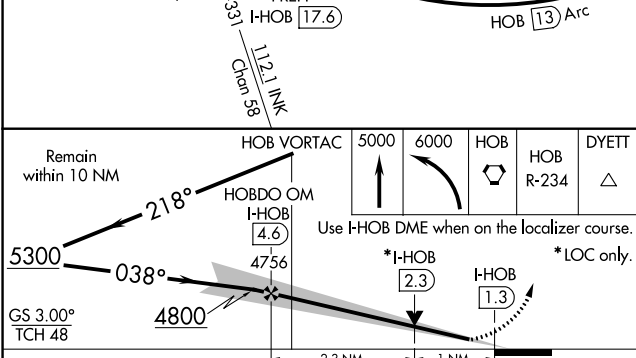
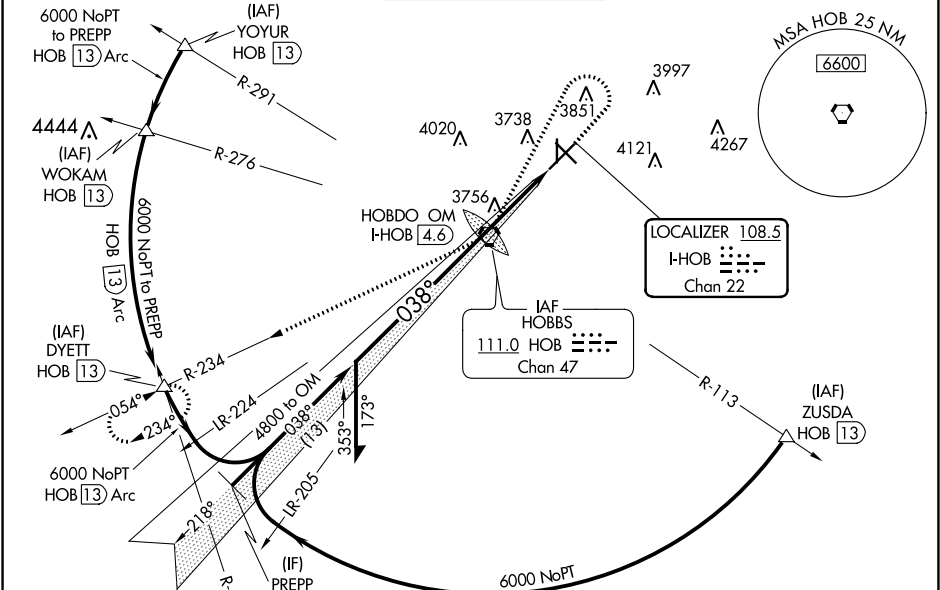
LOC/DME I-HOB	APP CRS	Rwy Idg	7020
108.5	038°	TDZE	3652
Chan 22		Apt Elev	3661

ILS or LOC RWY 3
LEA COUNTY RGNL (HOB)

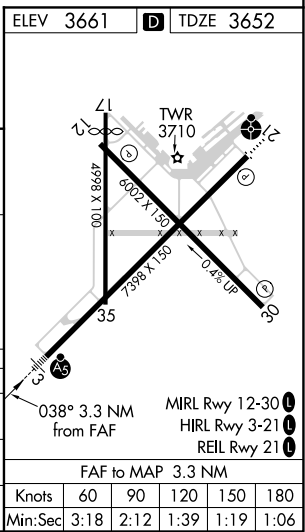
When local altimeter setting not received, use Carlsbad altimeter setting and increase all DA 281 feet and all MDA 300 feet; increase S-ILS all Cats visibility 3/4 mile, increase S-LOC Cats C/D visibility 3/4 mile, increase Circling Cat C visibility 3/4 mile, increase Circling Cat D visibility 1/2 mile. For inoperative MALSR, increase Carlsbad altimeter setting S-ILS all Cats visibility to 1 3/4. VDP NA when using Carlsbad altimeter setting. Rwy 17 helicopter visibility reduction below 1 SM NA. Circling Rwy 17 NA at night.

MALSR
MISSED APPROACH: Climb to 5000 then dimbling left turn to 6000 direct HOB VORTAC then via HOB VORTAC R-234 to DYETT INT/HOB 13 DME and hold.

ATIS	FORT WORTH CENTER	HOBBES TOWER *	GND CON	UNICOM
119.75	133.1 298.95	120.65 (CTAF) 0 317.4	121.9	122.95



CATEGORY	A	B	C	D
S-ILS 3	3852-1/2	200 (200-1/2)		
S-LOC 3	4020-1/2	368 (400-1/2)	4020-3/4	368 (400-3/4)
CIRCLING	4120-1 459 (500-1)	4160-1 499 (500-1)	4440-2 1/4 779 (800-2 1/4)	4440-2 1/2 779 (800-2 1/2)



SW-1, 03 DEC 2020 to 31 DEC 2020

SW-1, 03 DEC 2020 to 31 DEC 2020