

WAAS CH 93836 W12A	APP CRS 127°	Rwy Idg TDZE Apt Elev	7499 4457 4457
--	------------------------	-----------------------------	---

RNAV (GPS) RWY 12

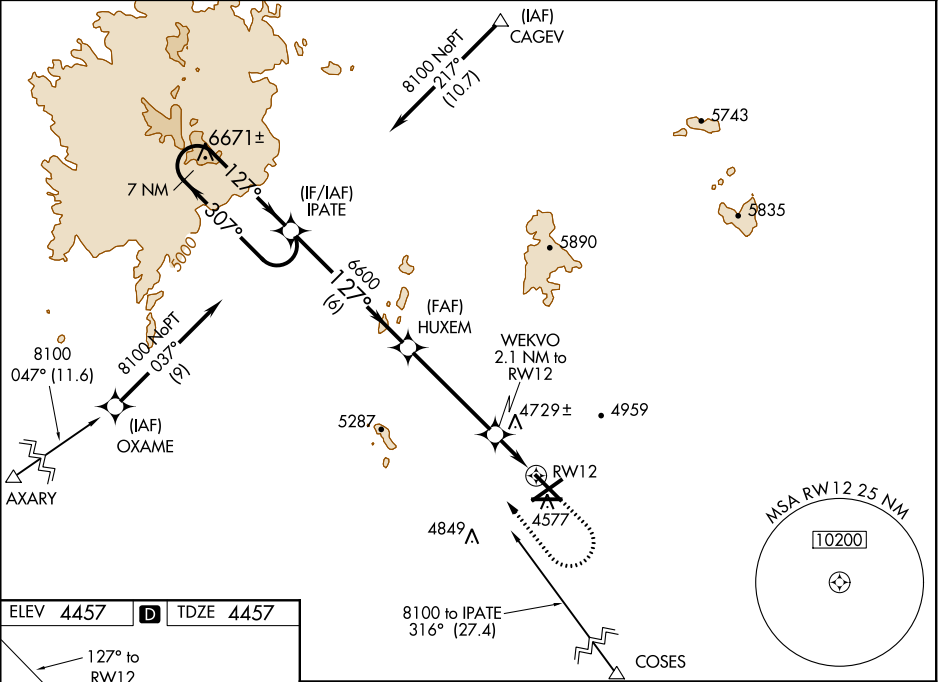
LAS CRUCES INTL (LRU)

⚠

For uncompensated Baro-VNAV systems, LNAV/VNAV NA below -12 °C (11°F) or above 49°C (120°F). DME/DME RNP-0.3 NA. Helicopter visibility reduction below ¾ SM NA. Baro-VNAV and VDP NA when using Deming altimeter setting. When local altimeter setting not received, use Deming altimeter setting: increase LPV DA to 4821 feet and LNAV/VNAV DA to 4824 feet and all visibilities ½ mile; increase all MDA 120 feet and visibility Cat C and D ½ mile.

MISSED APPROACH: Climb to 5800 then climbing right turn to 8100 direct IPATE and hold.

AWOS-3 119.025	ALBUQUERQUE CENTER 128.2 285.5	UNICOM 122.7 (CTAF) 0
--------------------------	--	---------------------------------



ELEV 4457 D TDZE 4457

REIL Rwy 12
HIRL Rwy 12-30 0
MIRL Rwy 4-22 and 8-26 0

<div>7 NM Holding Pattern</div> <div>IPATE</div> <div>HUXEM</div> <div>WEKVO 2.1 NM to RW12</div> <div>5800</div> <div>8100</div> <div>IPATE</div>				
<div>8100 ← 307°</div> <div>127° →</div> <div>127°</div> <div>6600</div> <div>6600</div> <div>*5180</div> <div>*1.2 NM to RW12</div> <div>RW12</div> <div>*LNAV only.</div>				
<div>GP 3.00° TCH 55</div> <div>6 NM</div> <div>4.5 NM</div> <div>0.9</div> <div>1.2 NM</div>				
CATEGORY	A	B	C	D
LPV DA	4707-¾		250 (300-¾)	
LNAV/VNAV DA	4710-¾		253 (300-¾)	
LNAV MDA	4900-1	443 (500-1)	4900-1¾	443 (500-1¾)
CIRCLING	4900-1 443 (500-1)	5040-1 583 (600-1)	5320-2½ 863 (900-2½)	5320-2¾ 863 (900-2¾)