

WAAS CH 63136 W30A	APP CRS 307°	Rwy Idg TDZE Apt Elev	7499 4444 4457
--	------------------------	-----------------------------	---

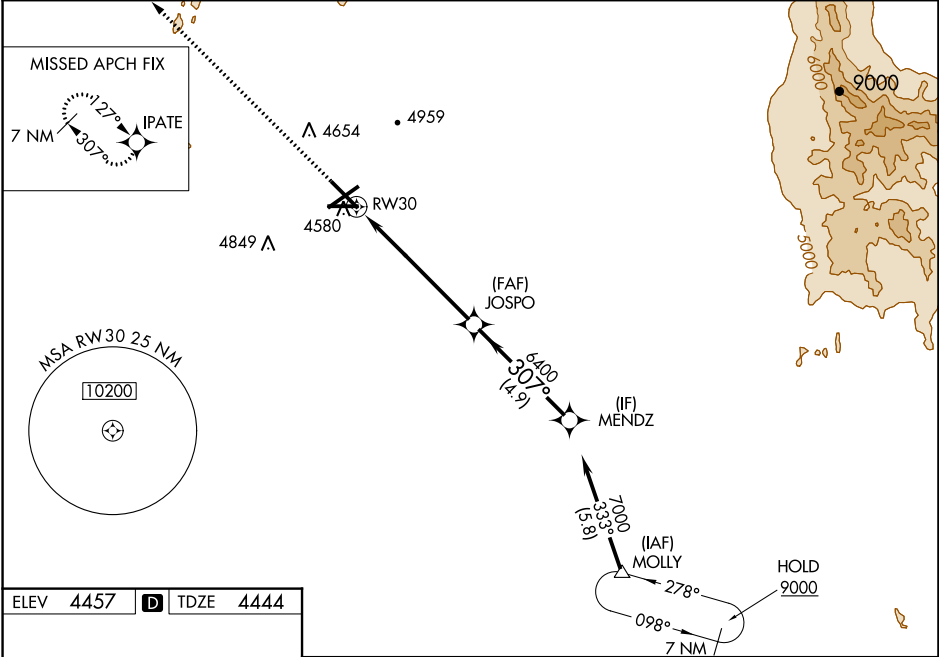
RNAV (GPS) RWY 30
LAS CRUCES INTL (LRU)

⚠ For uncompensated Baro-VNAV systems, LNAV/VNAV NA below -12°C (11°F) or above 51°C (124°F). DME/DME RNP-0.3 NA. Baro-VNAV and VDP NA when using Deming altimeter setting. When local altimeter setting not received, use Deming altimeter setting: increase LPV DA to 4758 feet, LNAV/VNAV DA to 4863 feet and all visibilities $\frac{3}{8}$ mile; increase all MDA 120 feet and visibility Cat C and D $\frac{1}{2}$ mile.

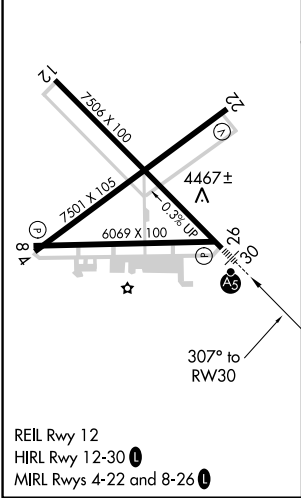
MALSR

MISSED APPROACH: Climb to 9000 direct IPATE and hold, continue climb-in-hold to 9000.

AWOS-3 119.025	ALBUQUERQUE CENTER 128.2 285.5	UNICOM 122.7 (CTAF) 0
--------------------------	--	--



ELEV 4457	D	TDZE 4444
------------------	----------	------------------



9000

↑

IPATE

✧

* LNAV only.

* 1.1 NM to RW30

RW30

1.1 NM

4.9 NM

4.9 NM

JOSPO

6400

307°


6400

MENDZ

7000

GP 3.00°

TCH 47

CATEGORY	A	B	C	D
LPV DA	4644-½		200 (200-½)	
LNAV/VNAV DA	4749-⅝		305 (300-⅝)	
LNAV MDA	4840-½ 396 (400-½)		4840-⅝ 396 (400-⅝)	
 CIRCLING	4900-1 443 (500-1)	5040-1 583 (600-1)	5320-2½ 863 (900-2½)	5320-2¾ 863 (900-2¾)

SW-1, 03 DEC 2020 to 31 DEC 2020

SW-1, 03 DEC 2020 to 31 DEC 2020