

WAAS
CH **69240**
W04A

APP CRS
038°

Rwy Idg **9207**
TDZE **4151**
Apt Elev **4199**

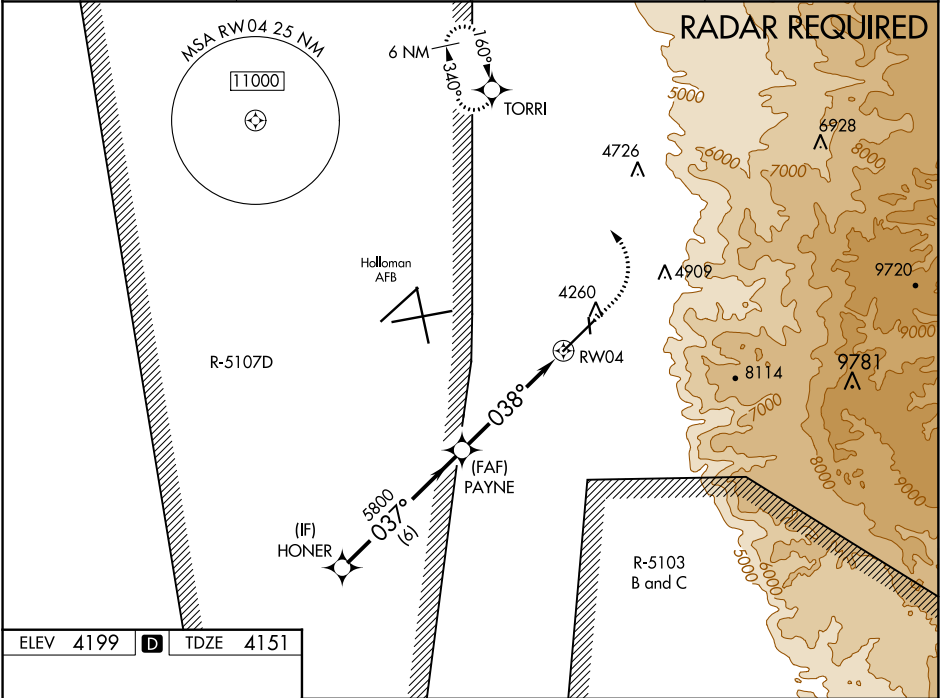
RNAV (GPS) RWY 4

ALAMOGORDO-WHITE SANDS RGNL (A.L.M)

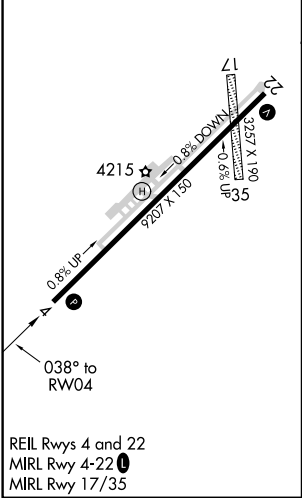
Circling NA to Rwy's 17 and 35. For uncompensated Baro-VNAV systems, LNAV/VNAV NA below -23°C (-9°F) or above 49°C (121°F). Circling NA southeast of Rwy 4-22. DME/DME RNP-0.3 NA. Civil aircraft require ATC Clearance prior to entering Restricted Area 5107D. Procedure NA when Holloman Approach Control closed.

MISSED APPROACH: Climb to 4600 then climbing left turn to 6000 direct TORR. and hold.

AWOS-3 127.825	HOLLOMAN APP CON ★ 120.6 269.225	ALBUQUERQUE CENTER 132.65 257.6 (When tower closed)	UNICOM 122.8 (CTAF) 0
--------------------------	--	--	---------------------------------



ELEV 4199	D	TDZE 4151
------------------	----------	------------------



<div>HONER</div> <div>6000</div> <div>PAYNE</div> <div>5800</div> <div>5800</div> <div>GP 3.00° TCH 55</div> <div>6 NM</div> <div>4.1 NM</div> <div>1 NM</div> <div>RW04</div> <div>*1 NM to RW04</div> <div>RW04</div> <div>* LNAV only</div>				
CATEGORY	A	B	C	D
LPV DA	4401-7 ⁸		250 (300-7 ⁸)	
LNAV/VNAV DA	4444-1		293 (300-1)	
LNAV MDA	4500-1		349 (400-1)	
CIRCLING	4680-1 481 (500-1)	4720-1 521 (600-1)	4860-1 ³ / ₄ 661 (700-1 ³ / ₄)	5300-3 1101 (1200-3)