

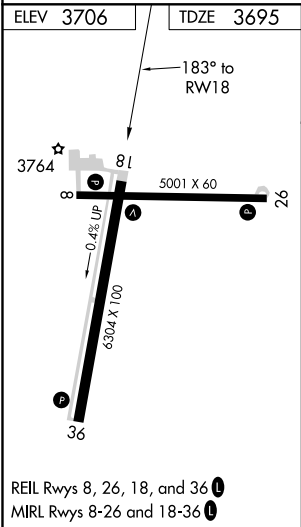
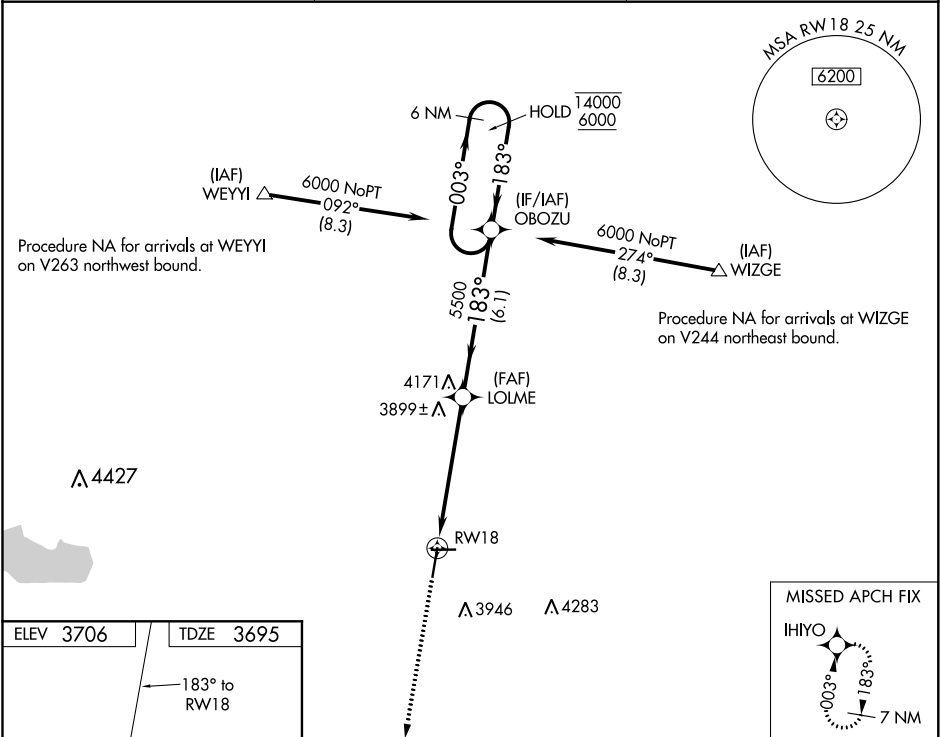
WAAS CH <b>86613</b> <b>W18A</b>	APP CRS <b>183°</b>	Rwy Idg TDZE <b>3695</b> Apt Elev <b>3706</b>
--	------------------------	---

RNAV (GPS) RWY 18

SOUTHEAST COLORADO RGNL (LAA)

RNP APCH. <div><div>▼</div><div>▲</div></div> Circling Rwy 8, 26 NA at night. For uncompensated Baro-VNAV systems, LNAV/VNAV NA below -22°C or above 54°C.	MISSED APPROACH: Climb to 6200 direct IHIYO and hold.
---	---

ASOS <b>135.625</b>	DENVER CENTER <b>133.4 377.175</b>	UNICOM <b>122.8 (CTAF) 1</b>
------------------------	---------------------------------------	---------------------------------



6200	IHIYO	VGSI and RNAV glidepath not coincident (VGSI Angle 3.00/TCH 45).		6 NM Holding Pattern	
*LNAV only.		LOLME	OBOZU	GP 3.00° TCH 41	
1.4 NM to RWY 18		5500	5500	14000 6000	
1.4 NM		4.1 NM	6.1 NM	003° 183°	
CATEGORY	A	B	C	D	
LPV DA	3945-1 250 (300-1)				
LNAV/VNAV DA	4014-1¼ 319 (400-1¼)				
LNAV MDA	4160-1	465 (500-1)	4160-1⅔ 465 (500-1⅔)	4160-1½ 465 (500-1½)	

SW-1, 03 DEC 2020 to 31 DEC 2020

SW-1, 03 DEC 2020 to 31 DEC 2020