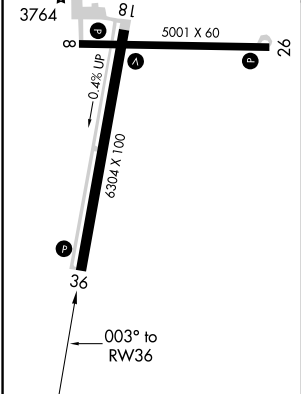
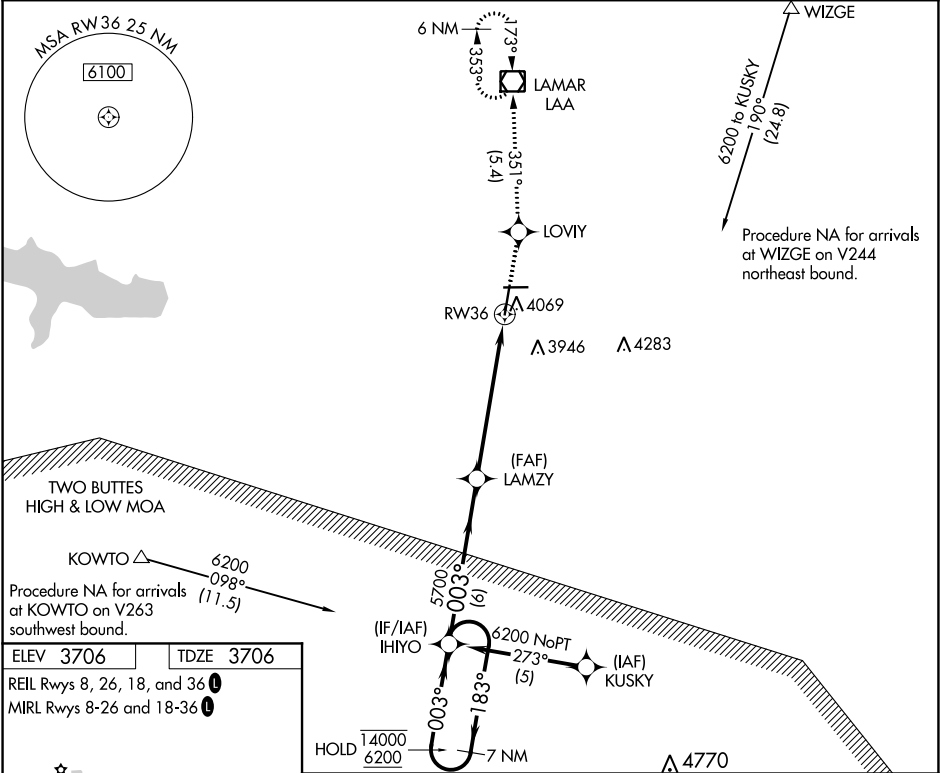


WAAS CH <b>99400</b> <b>W36A</b>	APP CRS <b>003°</b>	Rwy Idg TDZE Apt Elev	<b>6304</b> <b>3706</b> <b>3706</b>
--	------------------------	-----------------------------	---

**RNAV (GPS) RWY 36**  
SOUTHEAST COLORADO RGNL (LAA)

RNP APCH.	MISSED APPROACH: Climb to 6000 direct LOVIY and left turn on track 351° to LAA VOR/DME and hold.
▼ Circling Rwy 8, 26 NA at night. Rwy 36 helicopter visibility reduction below ¾ SM NA. For uncompensated Baro-VNAV systems, LNAV/VNAV NA below -22°C or above 54°C.	

ASOS <b>135.625</b>	DENVER CENTER <b>133.4 377.175</b>	UNICOM <b>122.8 (CTAF)</b>
------------------------	---------------------------------------	-------------------------------



VGSI and RNAV glidepath not coincident (VGSI Angle 3.00/TCH 45).			
7 NM Holding Pattern			
14000 6200 183° 003° 003° 5700 6000 LOVIY LAA tr 351° *LNAV only.			
GP 3.00° TCH 50			
6 NM 4 NM 2 NM			
CATEGORY	A	B	C
LPV DA	3956-1 250 (300-1)		
LNAV/VNAV DA	4250-2 544 (600-2)		
LNAV MDA	4380-1 674 (700-1)	4380-2 674 (700-2)	4380-2 674 (700-2 ¼)

SW-1, 03 DEC 2020 to 31 DEC 2020

SW-1, 03 DEC 2020 to 31 DEC 2020