

WAAS CH <b>82707</b> <b>W30B</b>	APP CRS <b>295°</b>	Rwy Idg TDZE <b>5599</b> Apt Elev <b>5673</b>
--	------------------------	---

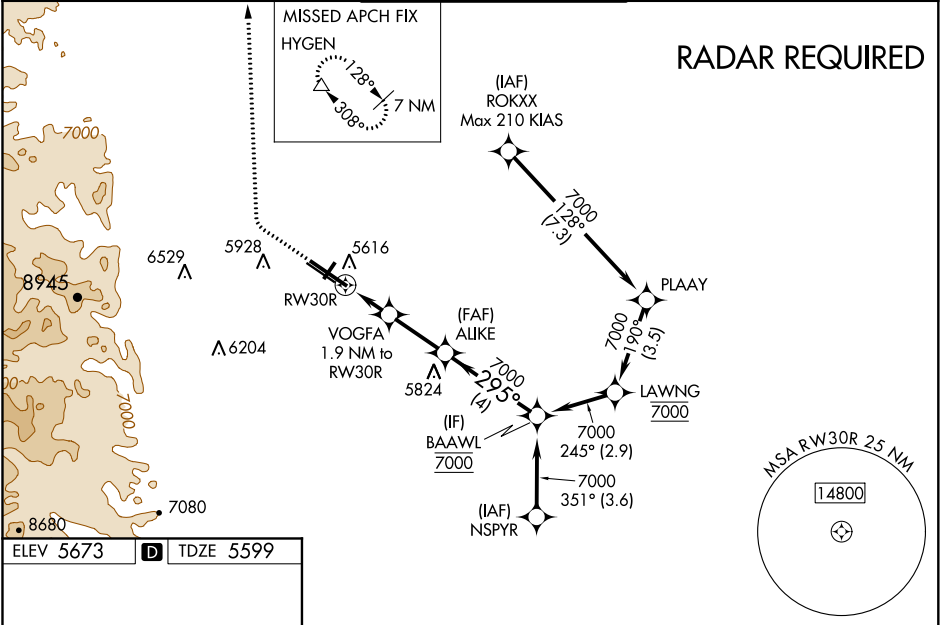
**RNAV (GPS) RWY 30R**  
ROCKY MOUNTAIN METROPOLITAN (BJC)

**NA** Baro-VNAV and VDP NA when using Denver Intl altimeter setting. For uncompensated Baro-VNAV systems, LNAV/VNAV NA below -26°C (-14°F) or above 47°C (116°F). DME/DME RNP-0.3 NA. When local altimeter setting not received, use Denver Intl altimeter setting and increase all DA 82 feet and all MDA 100 feet, increase LNAV/VNAV all Cats, LNAV Cat C/D and Circling Cat C visibility ½ mile. For inoperative MALSR, increase LNAV/VNAV all Cats visibility to 1 ½ mile and LNAV Cat C/D visibility to 1 mile. For inoperative MALSR, when using Denver Intl altimeter setting, increase LPV all Cats visibility to 1 mile, LNAV/VNAV all Cats visibility to 1 ½ mile and LNAV Cat A/B visibility to 1 mile and Cat C/D visibility to 1 ½ mile.

**MALSR**

**MISSED APPROACH:** Climb to 6300 then climbing right turn to 10300 direct HYGEM and hold, continue climb-in-hold to 10300.

ATIS <b>126.25</b>	DENVER APP CON <b>126.1 360.75</b>	METRO TOWER ★ <b>118.6 (CTAF) 233.7</b>	GND CON <b>121.7</b>	CLNC DEL <b>132.6</b>
-----------------------	---------------------------------------	--	-------------------------	--------------------------



ELEV 5673	<b>D</b>	TDZE 5599
<p>HIRL Rwy's 12L-30R MIRL Rwy's 3-21 and 12R-30L REIL Rwy's 12L, 12R and 30L</p>		
<p>6300 10300 HYGEM</p> <p>ALIJE 7000</p> <p>BAAWL 7000</p> <p>VOGFA 1.9 NM to RW30R</p> <p>*LNAV only.</p> <p>*1 NM to RW30R</p> <p>RW30R 5616</p> <p>6220*</p> <p>295°</p> <p>7000</p> <p>GP 3.00° TCH 52</p>		
CATEGORY	A	B C D
LPV DA	5799-½	200 (200-½)
LNAV/VNAV DA	5900-⅝	301 (300-⅝)
LNAV MDA	5940-½ 341 (300-½)	5940-⅝ 341 (300-⅝)
<b>C</b> CIRCLING	6180-1 507 (600-1)	6240-1 567 (600-1) 6360-2 687 (700-2) 6860-3 1187 (1200-3)

SW-1, 03 DEC 2020 to 31 DEC 2020

SW-1, 03 DEC 2020 to 31 DEC 2020