
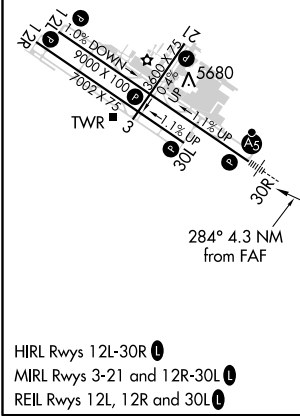
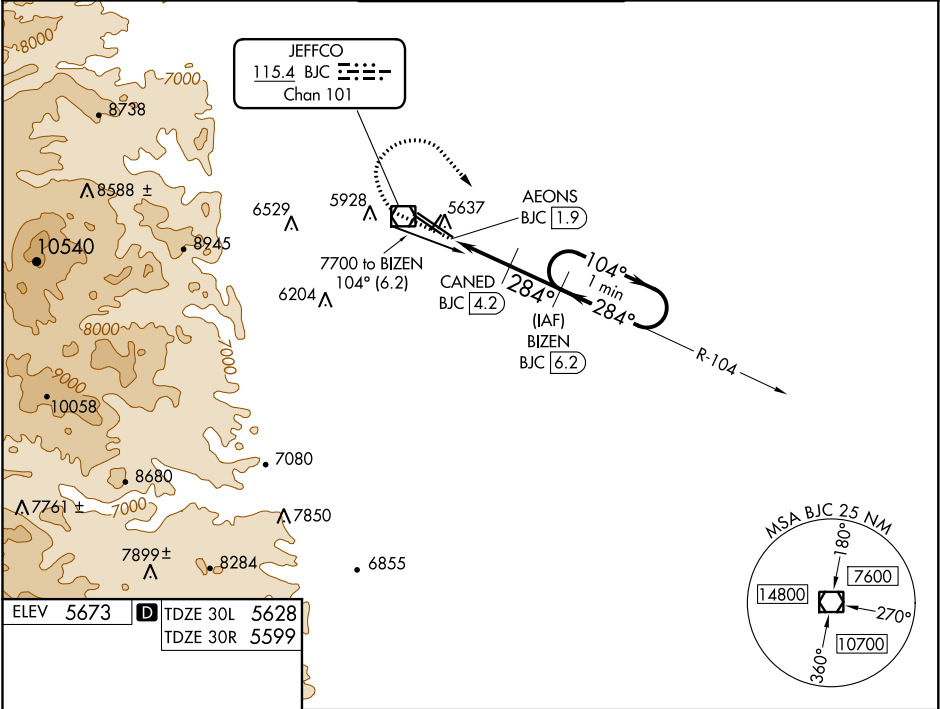


VOR/DME BJC	APP CRS	Rwy Idg	30L	30R
115.4	284°	TDZE	7002	9000
Chan 101		Apt Elev	5628	5599
			5673	5673

VOR/DME RWY 30L/R
ROCKY MOUNTAIN METROPOLITAN (BJC)

NA When local altimeter setting not received, use Denver Intl altimeter setting and increase all MDA 100 feet. Increase S-30L Cats C/D visibility to 1 mile and Circling Cat C to 2½ mile. For inoperative MALSR, increase S-30R all Cats visibility to 1 mile. For inoperative MALSR, when using Denver Intl altimeter setting, increase S-30R Cats C/D visibility to 1½ mile.	MALSR Rwy 30R 	MISSED APPROACH: Climb to 6100 then climbing right turn to 7000 on heading 150° and on BJC VOR/DME R-104 to BIZEN/BJC 6.2 DME and hold.
---	--	--

ATIS 126.25	DENVER APP CON 126.1 360.75	METRO TOWER * 118.6(CTAF) 233.7	GND CON 121.7	CLNC DEL 132.6
------------------------------	--	--	--------------------------------	---------------------------------



6100 ↑		7000 hdg 150°		BJC R-104		BIZEN BJC 6.2			
		AEONS BJC 1.9		CANED BJC 4.2		BIZEN BJC 6.2		One Minute Holding Pattern	
		30R 2.3 NM		30L 2.8 NM		2 NM		104° → 7000 ← 284°	
		6360		284°					
CATEGORY		A		B		C		D	
S-30R		5920-½		321 (300-½)		5920-¾		321 (300-¾)	
S-30L		5920-1		292 (300-1)		5920-7/8		292 (300-7/8)	
CIRCLING		6180-1 507 (600-1)		6240-1 567 (600-1)		6360-2 687 (700-2)		6860-3 1187 (1200-3)	