

LOC I-FNL <b>109.5</b>	APP CRS <b>331°</b>	Rwy Idg TDZE Apt Elev	<b>8500</b> <b>5016</b> <b>5016</b>
---------------------------	------------------------	-----------------------------	---

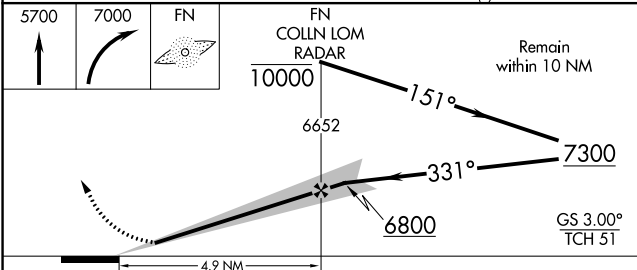
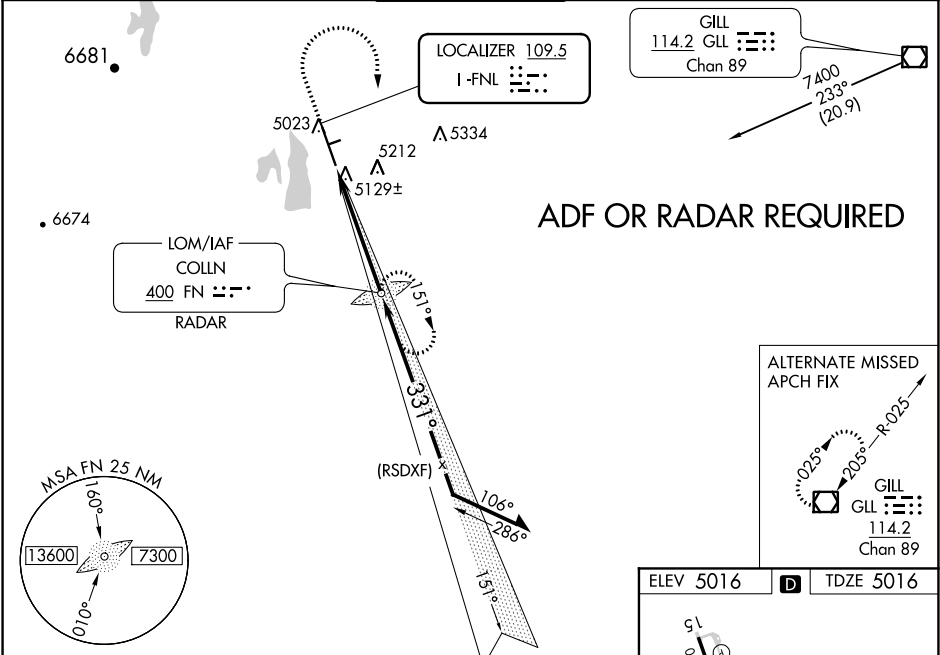
ILS or LOC RWY 33  
NORTHERN COLORADO RGNL (F'NL)

**NA** Circling to Rwy 6/24 NA at night. ADF required.  
When local altimeter setting not received, use Denver Intl altimeter setting and increase all DA 147 feet and all MDA 160 feet.  
Increase S-ILS 33 visibility all Cats ¼ SM, S-LOC 33 Cat C/D visibility ½ SM, and Circling Cat C/D visibility ½ SM.  
For inop ALS, when using Denver Intl altimeter setting increase S-ILS 33 visibility all Cats to 1¼ mile.

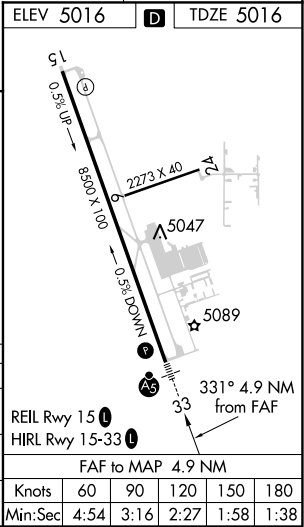
MALSR

MISSED APPROACH: Climb to 5700 then climbing right turn to 7000 direct COLLN LOM/RADAR and hold.

ATIS <b>135.075</b>	DENVER APP CON <b>134.85 251.125</b>	NOCO TOWER★ <b>118.4 (CTAF) 0</b>	GND CON <b>121.65</b>	CLNC DEL <b>120.25</b> (When twr closed)
------------------------	---	--------------------------------------	--------------------------	--



CATEGORY	A	B	C	D
S-ILS 33	5216-½ 200 (200-½)			
S-LOC 33	5380-½ 364 (400-½)		5380-¾ 364 (400-¾)	
CIRCLING	5500-1 484 (500-1)	5580-1 564 (600-1)	5580-1½ 564 (600-1½)	5760-2½ 744 (600-2½)



SW-1, 03 DEC 2020 to 31 DEC 2020

SW-1, 03 DEC 2020 to 31 DEC 2020