

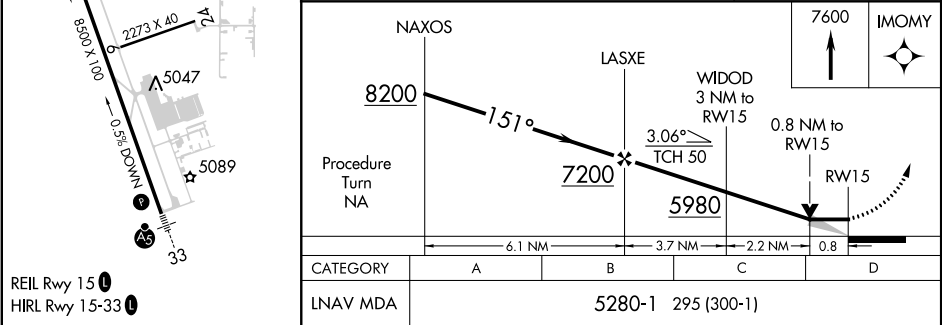
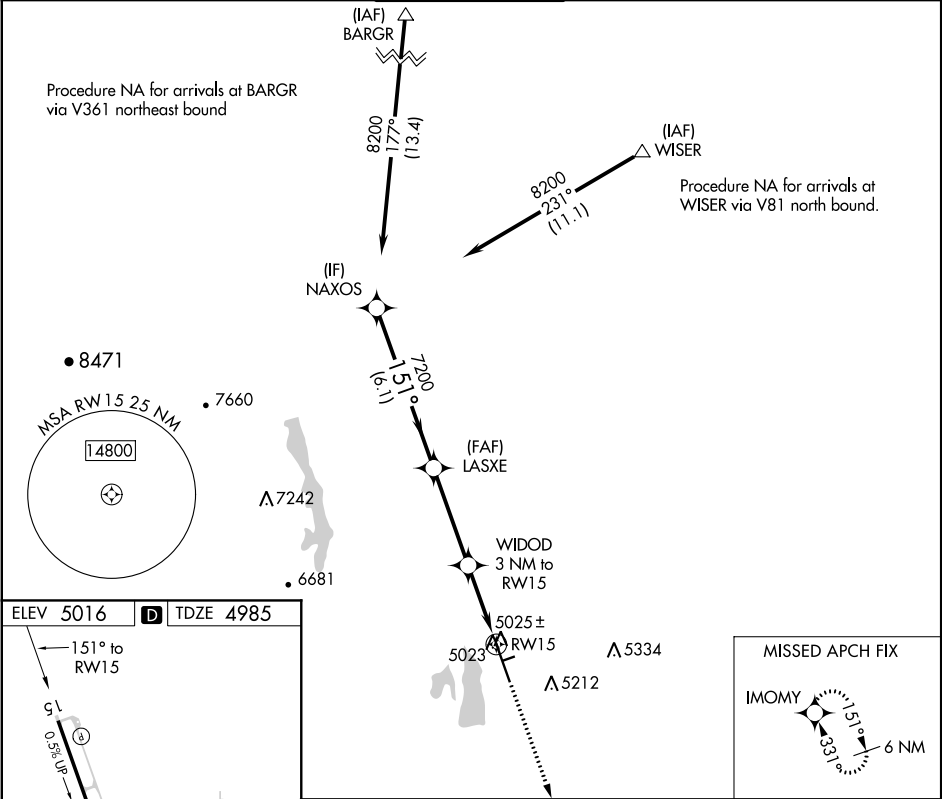
APP CRS	Rwy Idg	8500
151°	TDZE	4985
	Apt Elev	5016

RNAV (GPS) RWY 15

NORTHERN COLORADO RGNL (FNL)

RNP APCH.	MISSED APPROACH: Climb to 7600 direct IMOMY and hold.
<div><div>VDP NA when using Denver Intl altimeter setting.</div><div>When local altimeter setting not received, use Denver Intl altimeter setting and increase all MDA 160 feet and visibility Cat C and D ⅜ SM.</div></div>	

ATIS 135.075	DENVER APP CON 134.85 251.125	NOCO TOWER★ 118.4 (CTAF) 0	GND CON 121.65	CLNC DEL 120.25 (When twr closed)
-----------------	----------------------------------	-------------------------------	-------------------	---



SW-1, 03 DEC 2020 to 31 DEC 2020

SW-1, 03 DEC 2020 to 31 DEC 2020