


WAAS CH <b>97511</b> <b>W33A</b>	APP CRS <b>331°</b>	Rwy Idg <b>8500</b> TDZE <b>5016</b> Apt Elev <b>5016</b>
--	------------------------	---

**RNAV (GPS) RWY 33**  
NORTHERN COLORADO RGNL (FNL)

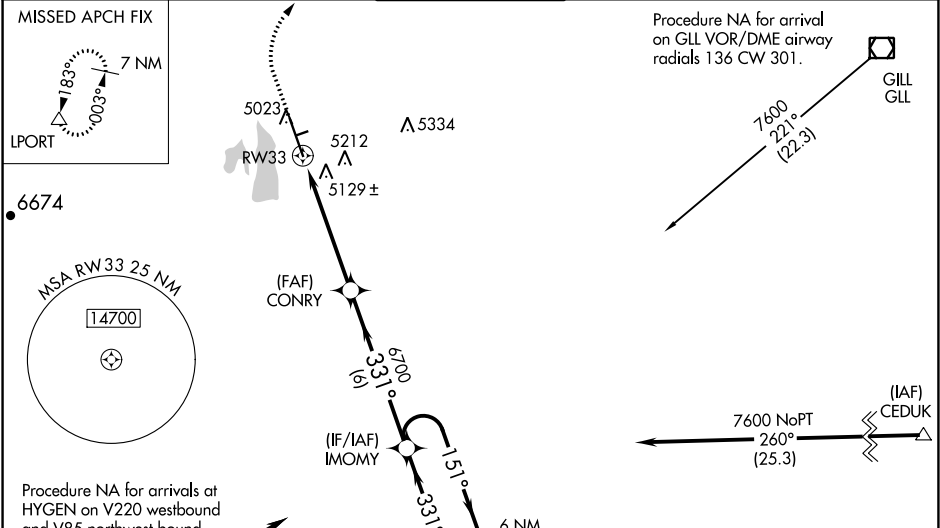
**⚠** Circling to Rwy 6/24 NA at night. For uncompensated Baro-VNAV systems, LNAV/VNAV NA below -24°C (-11°F) or above 48°C (119°F). DME/DME RNP-0.3 NA. VDP and Baro-VNAV NA when using Denver Intl altimeter setting. For inop ALS when using Denver Intl altimeter setting, increase LPV all Cats visibility to 1 1/2 mile. When local altimeter setting not received, use Denver Intl altimeter setting and increase all DA 148 feet and all MDA 160 feet; increase LPV all Cats visibility 1/4 mile, LNAV/VNAV all Cats visibility 3/8 mile, LNAV and Circling Cats C/D visibility 1/2 mile.

**MALSR**

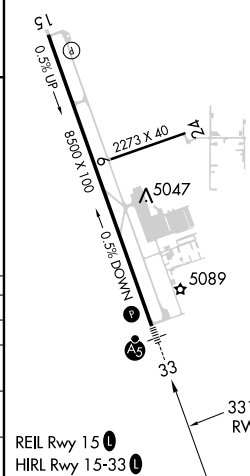


**MISSED APPROACH:** Climb to 5600 then climbing right turn to 7400 direct LPORT and hold. When authorized by ATC, continue climb-in-hold to 8000.

ATIS <b>135.075</b>	DENVER APP CON <b>134.85 251.125</b>	<b>NOCO TOWER★</b> <b>118.4 (CTAF) 0</b>	GND CON <b>121.65</b>	CLNC DEL <b>120.25</b> (When twr closed)
------------------------	---	---	--------------------------	--



ELEV 5016 **D** TDZE 5016



5600 7400 LPORT

\*LNAV only

\*1.2 NM to RW33

RW33

1.2 NM 3.9 NM 6 NM

CONRY

6700

331°

151°

7600

6 NM Holding Pattern

GP 3.00° TCH 51

5047

5089

331° to RW33

REIL Rwy 15

HIRL Rwy 15-33

CATEGORY	A	B	C	D
LPV DA		5216-1/2	200 (200-1/2)	
LNAV/VNAV DA		5430-7/8	414 (500-7/8)	
LNAV MDA	5460-1/2	444 (500-1/2)	5460-7/8	444 (500-7/8)
CIRCLING	5500-1 484 (500-1)	5580-1 564 (600-1)	5580-1 1/2 564 (600-1 1/2)	5760-2 1/2 744 (800-2 1/2)

SW-1, 03 DEC 2020 to 31 DEC 2020

SW-1, 03 DEC 2020 to 31 DEC 2020