

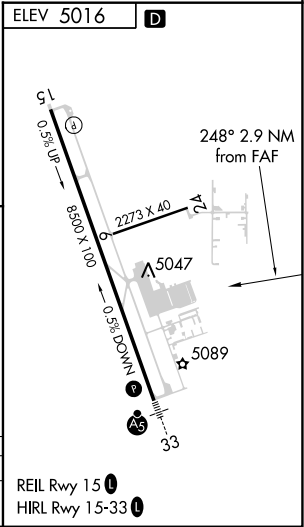
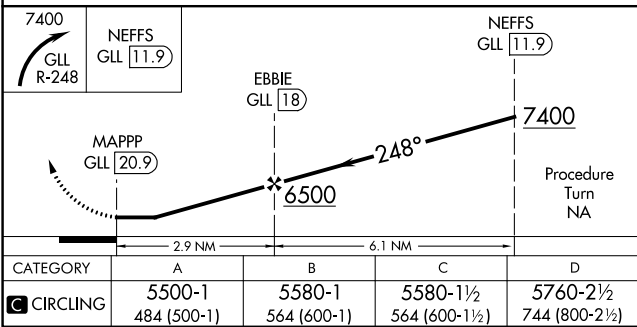
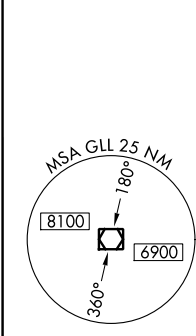
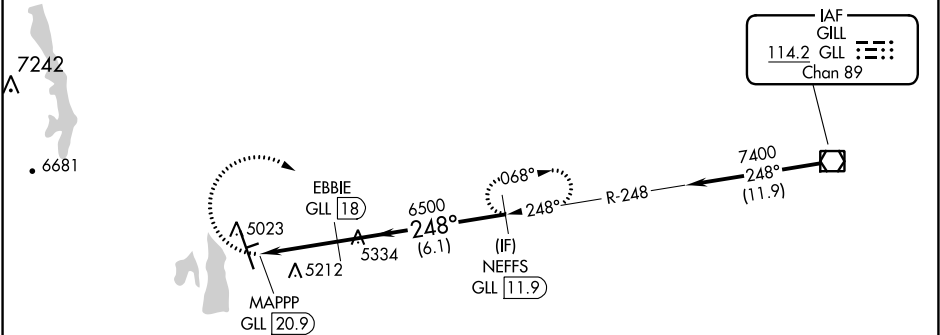
VOR/DME GLL <b>114.2</b> Chan <b>89</b>	APP CRS <b>248°</b>	Rwy Idg TDZE Apt Elev <b>N/A</b> <b>N/A</b> <b>5016</b>
---	------------------------	--

VOR-A  
NORTHERN COLORADO RGNL (FNL)

<p><b>⚠</b> Circling to Rwy 6/24 NA at night. <b>⚠</b> When local altimeter setting not received, use Denver Intl altimeter setting and increase all MDA 160 feet and Cat C/D visibility ½ SM. DME required.</p>	<p>MISSED APPROACH: Climbing right turn to 7400 via GLL VOR/DME R-248 to NEFFS/GLL 11.9 DME and hold.</p>
--	---

ATIS <b>135.075</b>	DENVER APP CON <b>134.85 251.125</b>	NOCO TOWER ★ <b>118.4</b> (CTAF) <b>0</b>	GND CON <b>121.65</b>	CLNC DEL <b>120.25</b> (When twr closed)
------------------------	---	--	--------------------------	--

Procedure NA for arrivals on GLL VOR/DME  
airway radials 221 CW 301.



SW-1, 03 DEC 2020 to 31 DEC 2020

SW-1, 03 DEC 2020 to 31 DEC 2020