

WAAS CH <b>82107</b> <b>W28A</b>	APP CRS <b>283°</b>	Rwy Idg <b>4800</b> TDZE <b>5813</b> Apt Elev <b>5885</b>
--	------------------------	---

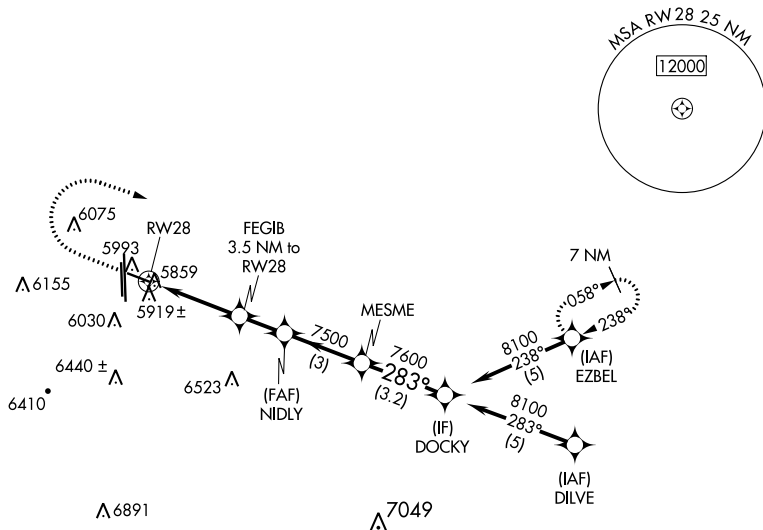
RNAV (GPS) RWY 28  
CENTENNIAL (APA)

RNP APCH.

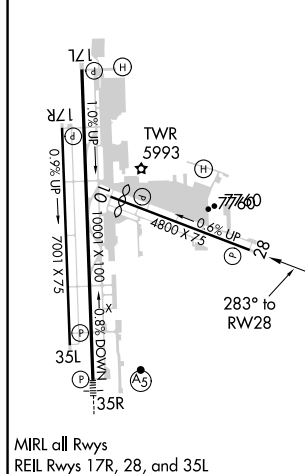
**T** For uncompensated Baro-VNAV systems, LNAV/VNAV NA below -26°C or above 49°C. Rwy 28 helicopter visibility reduction below 3/4 SM NA. Circling Rwy 35L NA at night.

**MISSED APPROACH:** Climb to 6400 then climbing right turn to 9000 direct EZBEL and hold.

ATIS 120.3	DENVER APP CON 132.75 269.3	CENTENNIAL TOWER 118.9	GND CON 121.8	CLNC DEL 128.6
---------------	--------------------------------	---------------------------	------------------	-------------------



ELEV	5885		TDZE	5813
------	------	--	------	------



MIRL all Rwys  
REIL Rwys 17R, 28, and 35L

6400 ↑	9000 ↗	EZBEL ✴				
*LNAV only.						
1.3 NM to RW28 RW28 1.3 2.2 NM 1.7 NM 3 NM 3.2 NM			FEGIB 3.5 NM to RW28 NIDLY 7500 MESME 6700 DOCKY 8100 GP 3.00° TCH 41'			
CATEGORY	A		B		C	D
LPV DA	6079-7/8 266 (200-7%)					
LNAV/VNAV DA	6119-1 306 (300-1)					
LNAV MDA	6260-1 447 (400-1)				6260-1 3/8 447 (400-1 3/8)	
CIRCLING	6400-1 515 (600-1)	6540-1 655 (700-1)	6740-2 1/2 855 (900-2 1/2%)		6900-3 1015 (1100-3)	