

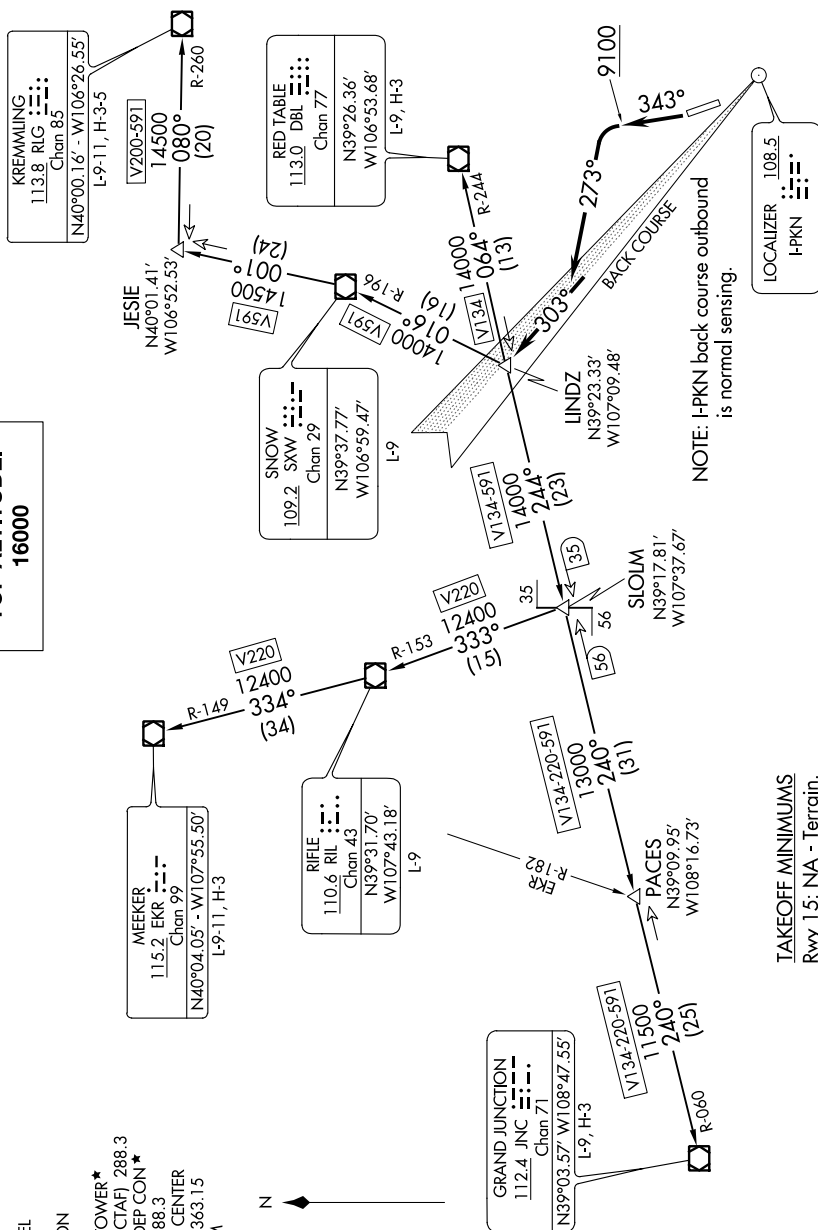
SW-1, 03 DEC 2020 to 31 DEC 2020

TOP ALTITUDE:
16000

ATIS	
120.4	
CLINC DEL	
123.75	
GND CON	
121.9	
ASPEN TOWER★	
1118.85 (CTAF)	288.3
ASPEN DEP CON★	
123.8	288.3
DENVER CENTER	
1119.85	363.15
UNICOM	
	22.95

LINDZ NINE DEPARTURE

(LINDZ9.LINDZ) 19JUL18



NOTE: I-PKN back course outbound is normal sensing.

TAKEOFF MINIMUMS
Rwy 15: NA - Terrain.
Rwy 33: 400-1 with mi

NOTE: Chart not to scale.

(NARRATIVE ON FOLLOWING PAGE)

SW-1, 03 DEC 2020 to 31 DEC 2020

ASPEN, COLORADO

ASPEN-PITKIN COUNTY/SARDY FIELD (ASE)