

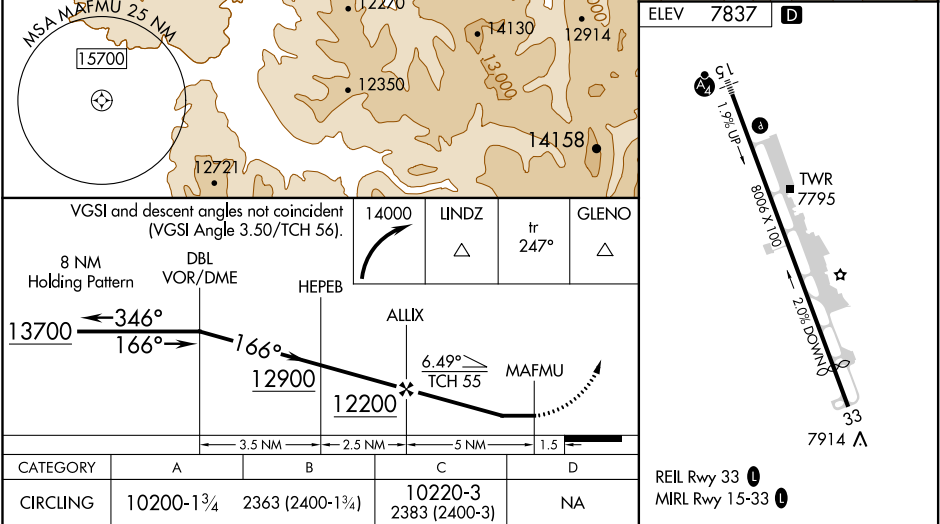
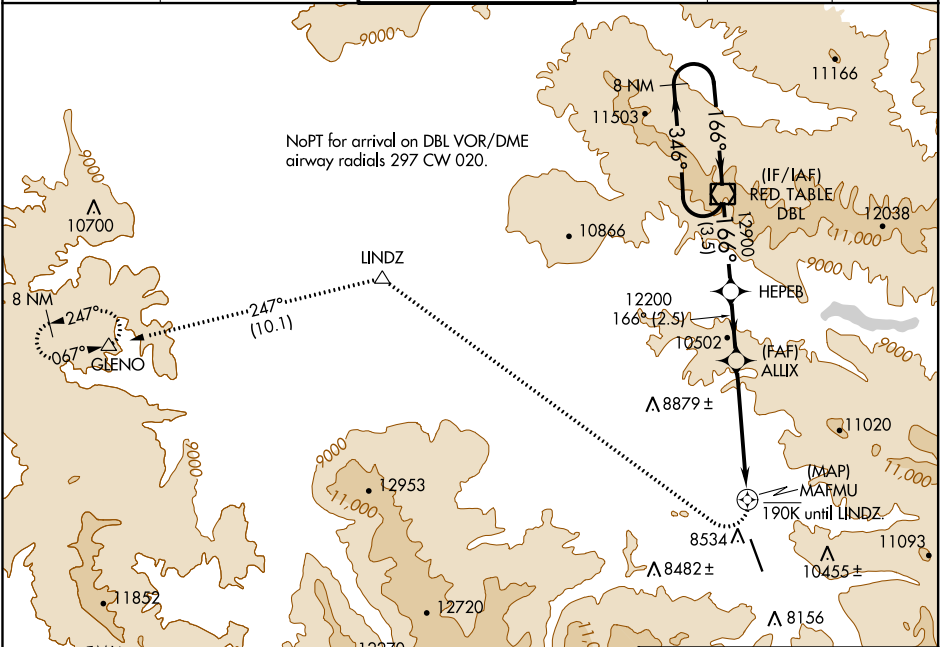
APP CRS	Rwy ldg	N/A
166°	TDZE	N/A
	Apt Elev	7837

RNAV (GPS)-F

ASPEN-PITKIN COUNTY/SARDY FIELD (ASE)

	When local altimeter setting not received, procedure NA. DME/DME RNP-0.3 NA. Visibility reduction by helicopters NA. Procedure NA at night.	MISSED APPROACH: Climbing right turn to 14000 direct LINDZ and on track 247° to GLENO and hold.
--	---	---

ATIS	ASPEN APP CON *	ASPEN TOWER *	GND CON	CLNC DEL	UNICOM
120.4	123.8 288.3	118.85 (CTAF) 0 288.3	121.9	123.75	122.95



CATEGORY	A	B	C	D
CIRCLING	10200-1 ³ / ₄	2363 (2400-1 ³ / ₄)	10220-3 2383 (2400-3)	NA