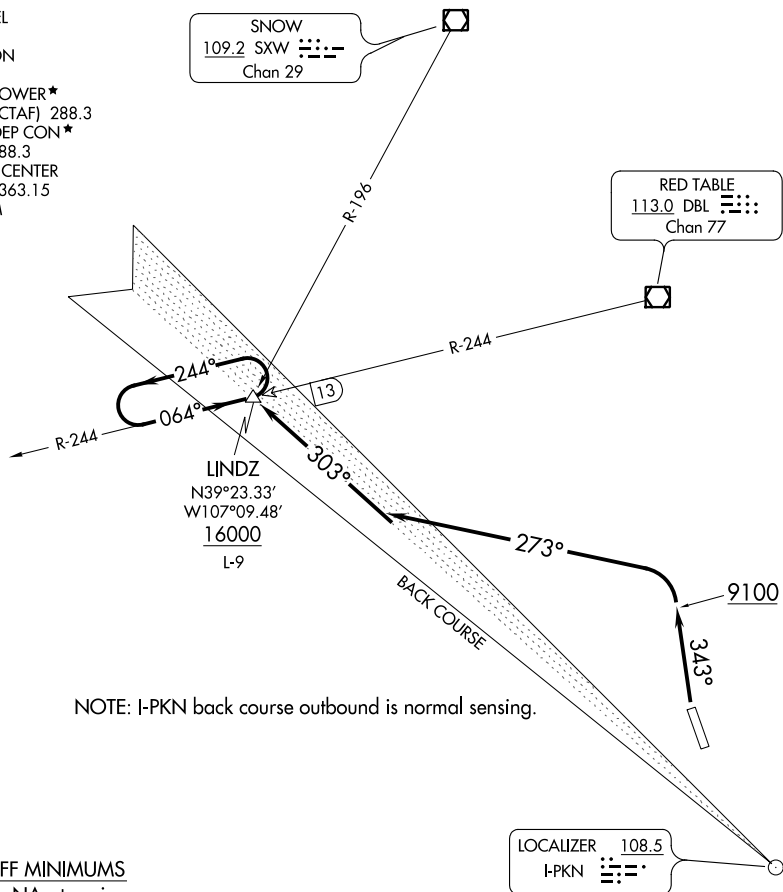


(SARDD3.LINDZ) 20002

## SARDD THREE DEPARTURE (OBSTACLE)

ASPEN-PITKIN COUNTY/SARDY FIELD (ASE)  
AL-5889 (FAA) ASPEN, COLORADO

ATIS  
120.4  
CLNC DEL  
123.75  
GND CON  
121.9  
ASPEN TOWER★  
118.85 (CTAF) 288.3  
ASPEN DEP CON★  
123.8 288.3  
DENVER CENTER  
119.85 363.15  
UNICOM  
122.95



### TAKEOFF MINIMUMS

Rwy 15: NA - terrain.

Rwy 33: 400-1 with minimum climb of 460' per NM to 14000.

### TAKEOFF OBSTACLE NOTES

Rwy 33: Multiple trees beginning 35' from DER, 386' right of centerline, up to 100' AGL/7722' MSL.

Multiple trees, bushes and terrain beginning 4' from DER, 400' left of centerline, up to 100' AGL/7821' MSL. Multiple trees, bushes, and terrain beginning 3484' from DER, 752' left of centerline, up to 100' AGL/8179' MSL.

NOTE: Chart not to scale.

### DEPARTURE ROUTE DESCRIPTION

TAKEOFF RUNWAY 33: Climb on heading 343° to 9100, then climbing left turn to 16000 on heading 273° to intercept I-PKN NW course outbound to LINDZ INT/DBL 13 DME. Climb in LINDZ holding pattern to cross LINDZ at or above 16000 before proceeding on course.

## SARDD THREE DEPARTURE (OBSTACLE)

(SARDD3.LINDZ) 27JUN13

ASPEN, COLORADO  
ASPEN-PITKIN COUNTY/SARDY FIELD (ASE)

SW-1, 03 DEC 2020 to 31 DEC 2020