

APP CRS
323°

Rwy Idg	N/A
TDZE	N/A
Apt Elev	6882

RNAV (GPS)-E

STEAMBOAT SPRINGS/BOB ADAMS FIELD (SBS)

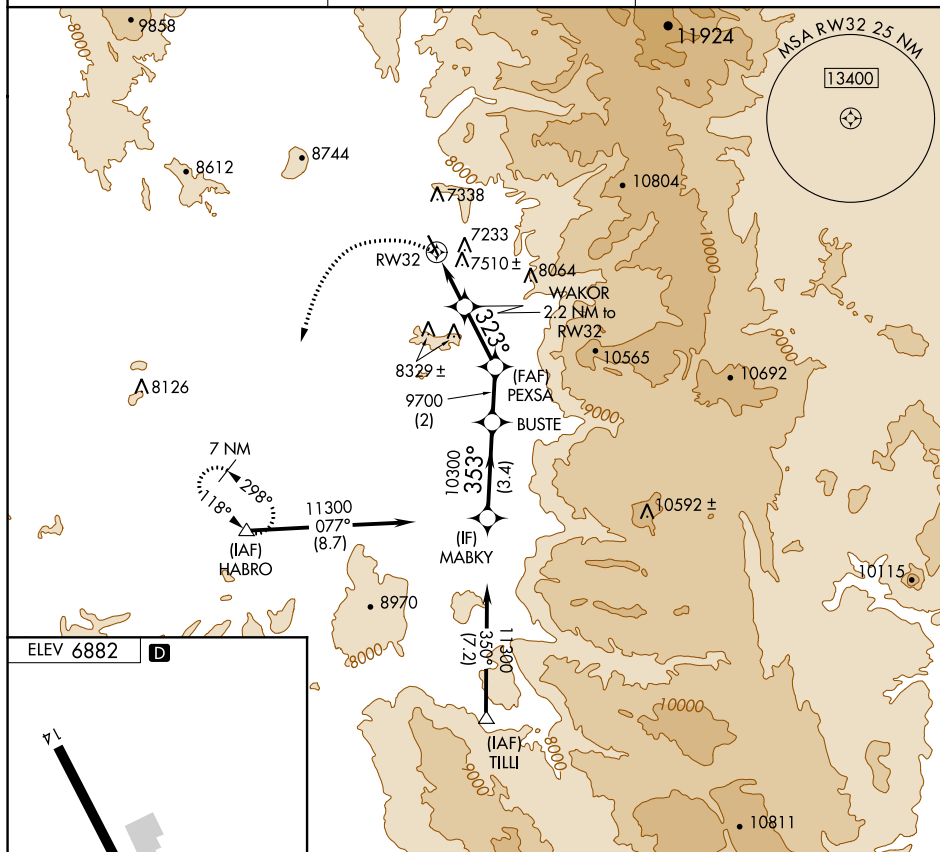

 T
 A NA
 -26°C

Circling NA northeast of Rwy 14-32.
DME/DME RNP- 0.3 NA.
When local altimeter setting not received, use Yampa Valley altimeter setting and increase all MDA 80 feet.

MISSED APPROACH: Climbing left turn to 11300 direct HABRO and hold, continue climb-in-hold to 11300.

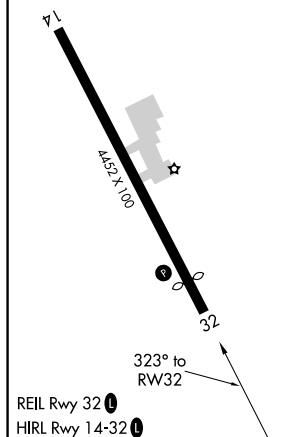
AWOS-3
118.325

DENVER CENTER
120.475 235.975

UNICOM ★
122.8 (CTAF) 

ELEV 6882

D



11300				
	HABRO 	VGSI and descent angles not coincident. WAKOR 2.2 NM to RW32		
	RW32 $\leq 7.75^\circ$ TCH 40	PEXSA	BUSTE	MABKY 11300
	2.2 NM	2.4 NM	2 NM	3.4 NM
CATEGORY	A	B	C	D
C CIRCLING	8140-1¼ 1258 (1300-1¼)	8140-1½ 1258 (1300-1½)	NA	

STEAMBOAT SPRINGS, COLORADO

Orig-B 23APR20

STEAMBOAT SPRINGS/BOB ADAMS FIELD (SBS)

40°31'N-106°52'W

RNAV (GPS)-E