

APP CRS  
**214°**

Rwy Idg  
TDZE  
Apt Elev

**6601**  
**5180**  
**5200**

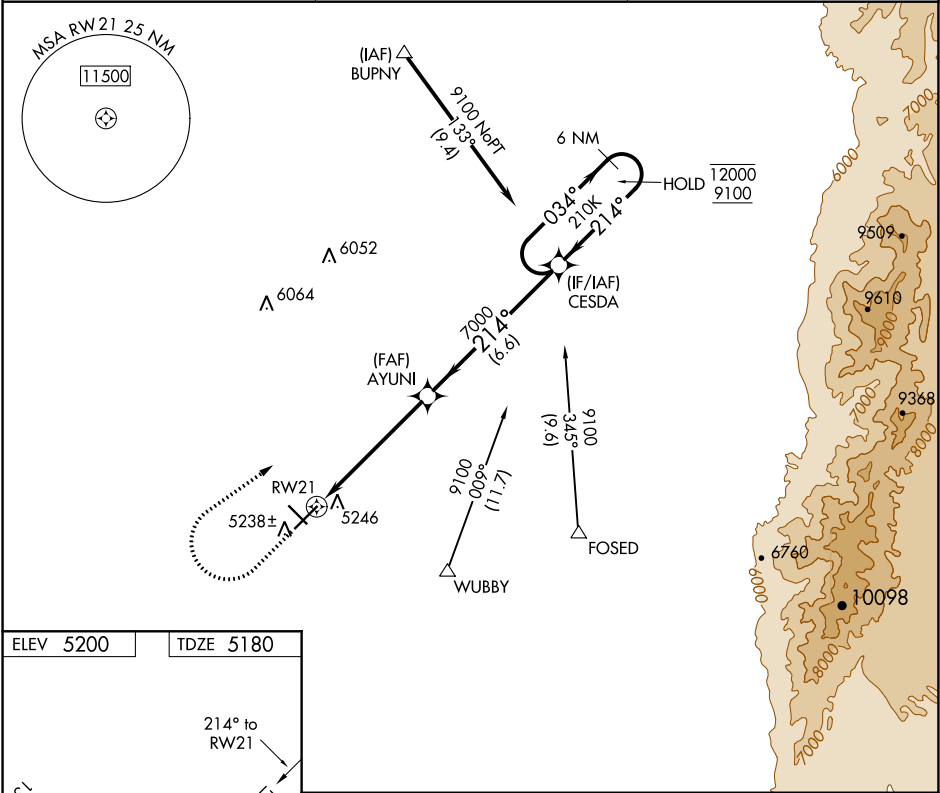
**RNAV (GPS) RWY 21**  
BELEN RGNL (BRG)

RNP APCH

▼ Procedure NA at night.  
Rwy 21 helicopter visibility reduction below 1 SM NA.

MISSED APPROACH: Climb to 6800  
then climbing right turn to 9100 direct  
CESDA and hold.

AWOS-3PT <b>118.55</b>	ALBUQUERQUE APP CON <b>123.9 354.1</b>	UNICOM <b>122.8 (CTAF) 0</b>
---------------------------	---	---------------------------------



ELEV 5200

TDZE 5180

214° to RWY 21

5280 X 75  
-0.4% UP

6601 X 60  
-0.2% UP

31

6800

9100

CESDA

RWY 21

AYUNI

CESDA

6 NM Holding Pattern

034° → 12000  
← 214° 9100

7000

3.00° TCH 40

5.6 NM

6.6 NM

CATEGORY	A	B	C	D
LNAV MDA	5560-1 380 (400-1)			NA
CIRCLING	5600-1 400 (400-1)	5660-1 460 (500-1)	5660-1½ 460 (500-1½)	NA

MIRL Rwy 3-21 0