

VOR/DME EKR <b>115.2</b> Chan <b>99</b>	APP CRS <b>107°</b>	Rwy Idg TDZE Apt Elev	<b>N/A</b> <b>N/A</b> <b>6421</b>
---	------------------------	-----------------------------	---

VOR-A

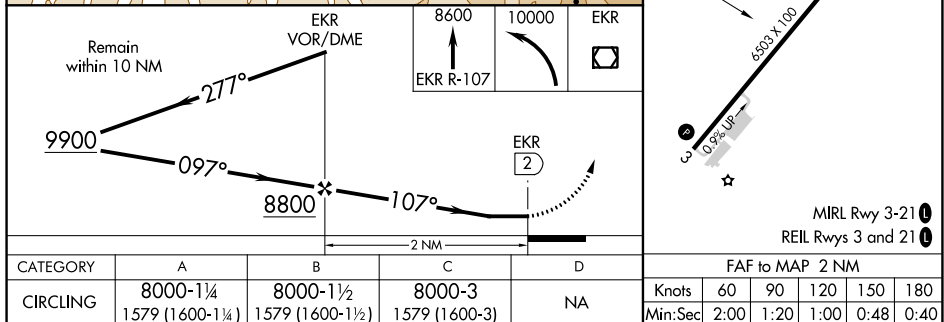
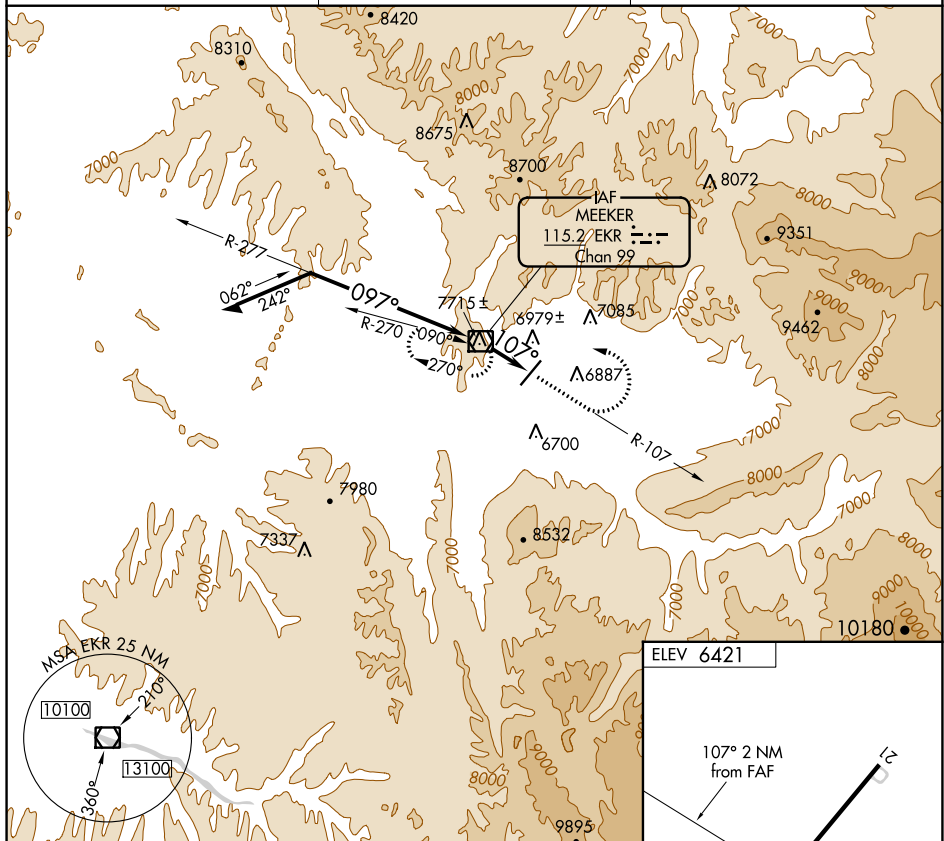
MEEKER COULTER FIELD (EEO)


 NA
  -25°C

Circling not authorized west of Rwy 3-21.  
Night landing: Rwy 21 NA.  
Helicopter visibility reduction below 1 SM NA.

**MISSED APPROACH:** Climb via EKR VOR/DME R-107 to 8600, then climbing left turn to 10000 direct EKR VOR/DME and hold.

ASOS 135.525	DENVER CENTER 134.5 327.8	UNICOM 122.8 (CTAF) 0
-----------------	------------------------------	--------------------------



MEEKER, COLORADO

Amdt 1A 31MAR16

MEEKER COULTER FIELD (EEO)

VOR-A

40°03'N-107°53'W

SW-1, 03 DEC 2020 to 31 DEC 2020

SW-1, 03 DEC 2020 to 31 DEC 2020