




APP CRS <b>078°</b>	Rwy Idg TDZE Apt Elev	<b>7000</b> <b>5498</b> <b>5537</b>
------------------------	-----------------------------	---

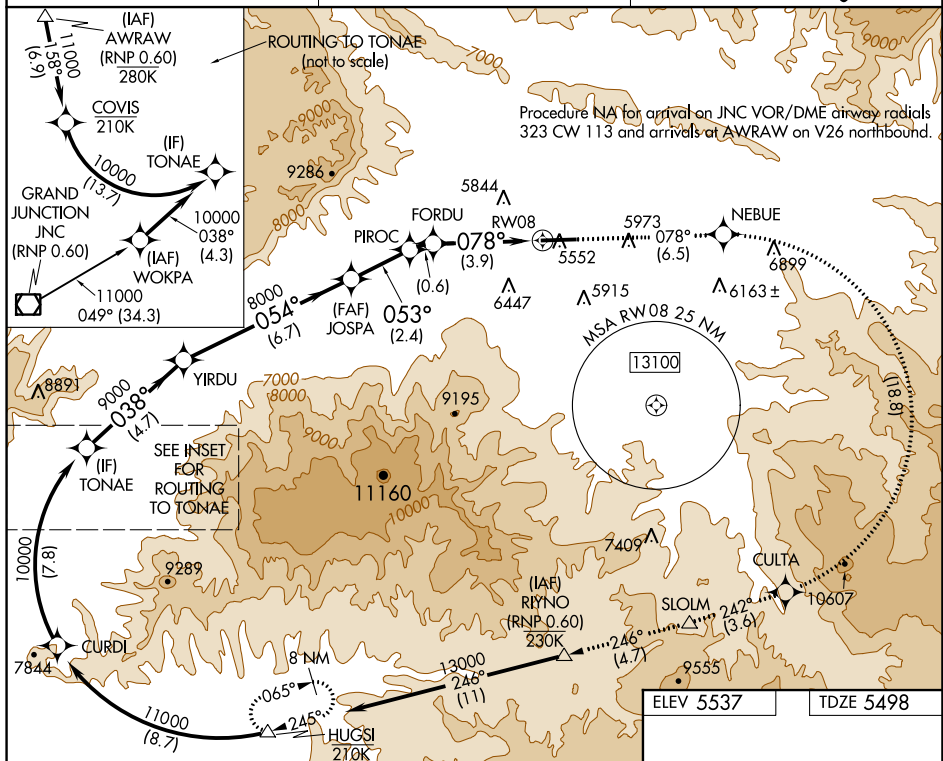
RNAV (RNP) Z RWY 8  
RIFLE GARFIELD COUNTY (RIL)




	RF and GPS required. Procedure NA for wingspans greater than 136 feet.
	For uncompensated Baro-VNAV systems, procedure NA below -24°C (-11°F) or above 54°C (130°F).
	-14°C

\*Missed approach requires minimum climb of 425 feet per NM to 11300.  
 \*Missed approach requires minimum climb of 425 feet per NM to 10000; if unable, see RNAV (GPS) Y RWY 8.

**MISSED APPROACH:** Climb to 13000 on track 078° to NEBUE, right turn to CULTA, and track 242° to SLOLM and track 246° to RIYNO and track 246° to HUGSI and hold.

ASOS 135.275	DENVER CENTER 134.95 327.075	UNICOM 122.8 (CTAF) 1
-----------------	---------------------------------	--------------------------



VGS1 and RNAV glidepath not coincident (VGS1 Angle 3.00/TCH 47).				13000 ↑ tr 078°	NEBUE 		CULTA 
TONAE 10000	YIRDU 9000	JOSPA 8000	PIROC 7178	FORDU 6870	RW08		
038°		054°		053°	078°		
4.7 NM		6.7 NM		2.4 NM	0.6 NM		3.9 NM
CATEGORY	A		B		C		D
RNP 0.10 DA*	5748-1		250 (300-1)				NA
RNP 0.30 DA**	6391-3		893 (900-3)				NA

**AUTHORIZATION REQUIRED**

SW-1, 03 DEC 2020 to 31 DEC 2020