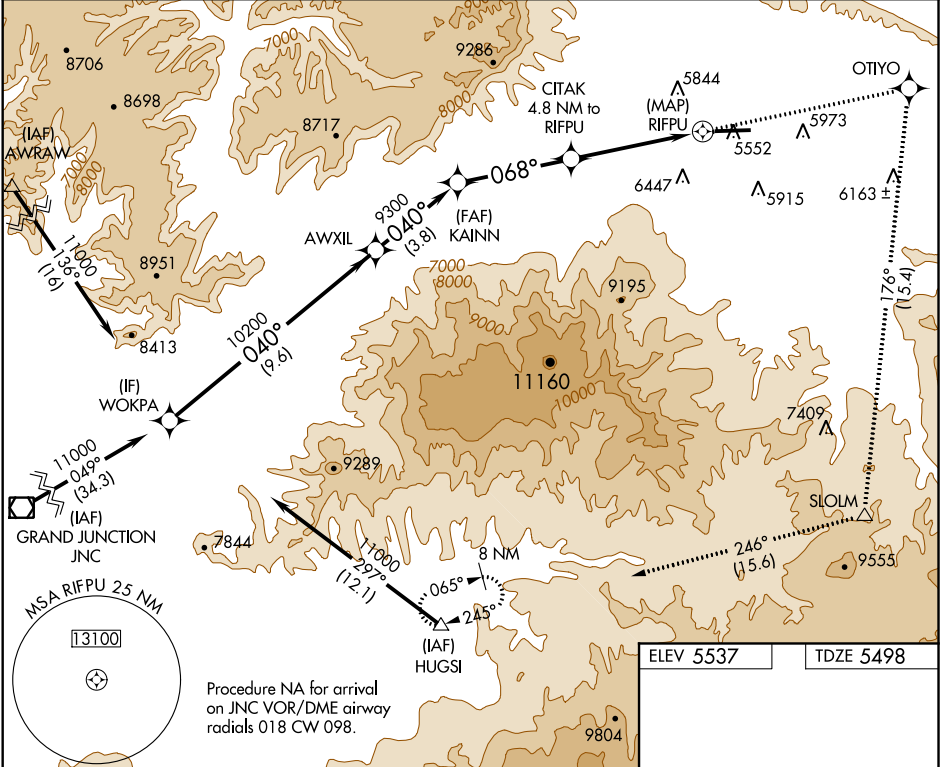


APP CRS	Rwy Idg	7000
068°	TDZE	5498
	Apt Elev	5537

RNAV (GPS) Y RWY 8
RIFLE GARFIELD COUNTY (RIL)

<p>▽ A -14°C</p>	<p>DME/DME RNP-0.3 NA. Visibility reduction by helicopters NA. Circling NA south of Rwy 8-26 at night.</p>	<p>MISSED APPROACH: Climb to 13000 direct OTIYO and right turn on track 176° to SLOLM and on track 246° to HUGSI and hold, continue climb-in-hold to 13000.</p>
--------------------------	--	---

ASOS 135.275	DENVER CENTER 134.95 327.075	UNICOM 122.8 (CTAF) 0
-----------------	---------------------------------	--------------------------



VGSJ and descent angles not coincident (VGSJ Angle 3.00/TCH 47).		13000	OTIYO	SLOLM	HUGSI
WOKPA				tr 176°	tr 246°
11000	AWXIL	KAINN	CITAK	RIFPU	
Procedure Turn NA	10200	9300	7640		
9.6 NM		3.8 NM	4.2 NM	4.8 NM	0.5 NM
CATEGORY	A	B	C	D	
LNAV MDA	7420-1¼ 1922 (1900-1¼)	7420-1½ 1922 (1900-1½)	7420-3 1922 (1900-3)	NA	
CIRCLING	7420-1¼ 1883 (1900-1¼)	7420-1½ 1883 (1900-1½)	7420-3 1883 (1900-3)	NA	
HIRL Rwy 8-26 0		REIL Rwy 8 and 26 0			