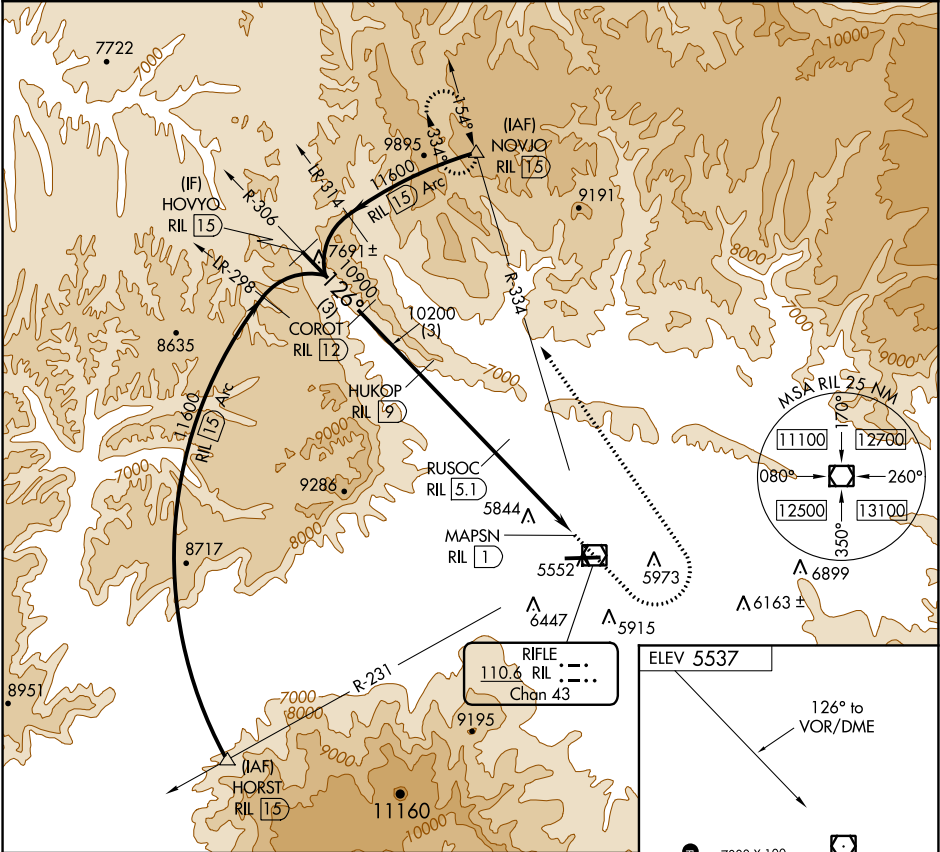


VOR/DME RIL 110.6 Chan 43	APP CRS 126°	Rwy Idg TDZE Apt Elev N/A N/A 5537
---	------------------------	--

VOR/DME-C
RIFLE GARFIELD COUNTY (RIL)

<p>⚠ Circling NA south of Rwy 8-26 at night.</p> <p>❄ -14°C</p>	<p>MISSED APPROACH: Climb to 8500 then climbing left turn 12000 on heading 305° and RIL VOR/DME R-334 to NOVJO/15 DME and hold, continue climb-in-hold to 12400.</p>
---	--

ASOS 135.275	DENVER CENTER 134.95 327.075	UNICOM 122.8 (CTAF) 0
------------------------	--	---------------------------------



HOVYO RIL 15	COROT RIL 12	HUKOP RIL 9	RUSOC RIL 5.1	MAPSN RIL 1	NOVJO RIL 15
11600	10900	10200	8800	8500	12000
<p>3 NM 3 NM 3.9 NM 4.1 NM</p>					
CATEGORY	A	B	C	D	
CIRCLING	7360-1¼ 1823 (1900-1¼)	7360-1½ 1823 (1900-1½)	7360-3 1823 (1900-3)	NA	

ELEV 5537	126° to VOR/DME
7000 X 100	1.0% UP
8500	12000
hgdg 305°	RIL R-334
NOVJO	NOVJO
RIL VOR/DME	RIL VOR/DME
MAPSN RIL 1	MAPSN RIL 1
HIRL Rwy 8-26 0	REIL Rwy 8 and 26 0