

WAAS CH <b>42539</b> <b>W22A</b>	APP CRS <b>215°</b>	Rwy Idg TDZE Apt Elev	<b>7398</b> <b>5817</b> <b>5837</b>
--	------------------------	-----------------------------	---

RNAV (GPS) RWY 22

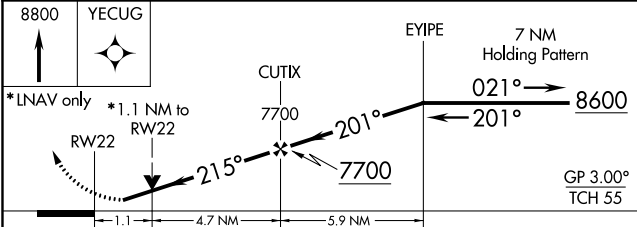
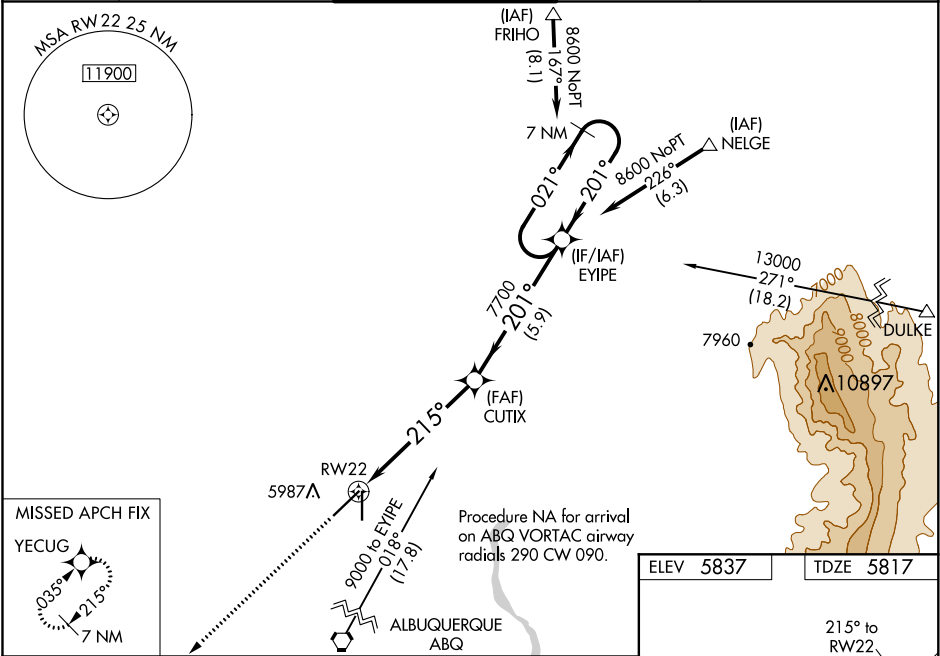
DOUBLE EAGLE II (A/E/G)

For uncompensated Baro-VNAV systems, LNAV/VNAV NA below -26°C (-14°F) or above 46°C (114 °F). DME/DME RNP-0.3 NA. When local altimeter setting not received, use Albuquerque Intl Sunport altimeter setting and increase LPV DA to 6111, LNAV-VNAV DA to 6234, increase all MDA 100 feet, and increase LNAV/VNAV visibility all Cats and LNAV Cat C/D visibility ¾ mile and Circling Cat C/D visibility ½ mile. For inop MALSR, increase LNAV/VNAV all Cats visibility to 1 mile. For inop MALSR when using Albuquerque Intl Sunport altimeter setting, increase LPV all Cats visibility to 1 mile and LNAV/VNAV all Cats and LNAV Cat C/D visibility to 1 ½ mile.

MALSR

MISSED APPROACH:  
Climb to 8800 direct  
YECUG and hold.

AWOS-3PT <b>119.025</b>	ALBUQUERQUE APP CON <b>127.4 253.5</b>	DOUBLE EAGLE II TOWER ★ <b>120.15</b> (CTAF) <b>0</b>	GND CON <b>121.625</b>	CLNC DEL <b>124.8</b> (When twr closed)
----------------------------	---	--	---------------------------	---



CATEGORY	A	B	C	D
LPV DA		6017-½	200 (200-½)	
LNAV/VNAV DA		6140-⅝	323 (400-⅝)	
LNAV MDA	6200-½	383 (400-½)	6200-⅝	383 (400-⅝)
CIRCLING	6400-1	563 (600-1)	6420-1½ 583 (600-1½)	6640-2½ 803 (900-2½)

