

WAAS CH 72999 W15A	APP CRS 154°	Rwy Idg 5199 TDZE 4218 Apt Elev 4218
--	------------------------	---

RNAV (GPS) RWY 15

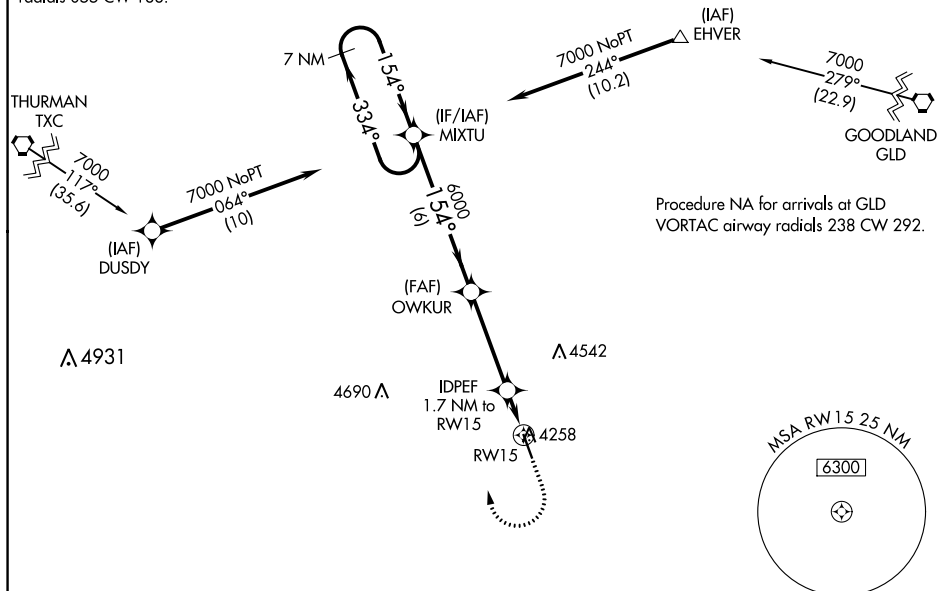
KIT CARSON COUNTY (ITR)

T For uncompensated Baro-VNAV systems, LNAV/VNAV NA below -22°C (-7°F) or above 53°C (127°F). DME/DME RNP-0.3 NA.

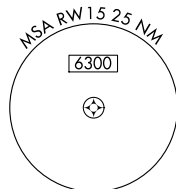
MISSED APPROACH: Climb to 4700 then climbing right turn to 7000 direct MIXTU and hold.

ASOS 135.225	DENVER CENTER 132.7 226.675	UNICOM 122.8 (CTAF) 0
------------------------	---------------------------------------	---------------------------------

Procedure NA for arrival at TXC VORTAC airway
radials 055 CW 188.



Procedure NA for arrivals at GLD
VORTAC airway radials 238 CW 292.



ELEV 4218		TDZE 4218
-----------	--	-----------

