

WAAS CH <b>53420</b> <b>W24A</b>	APP CRS <b>241°</b>	Rwy Idg TDZE Apt Elev	<b>8120</b> <b>6771</b> <b>6814</b>
--	------------------------	-----------------------------	---

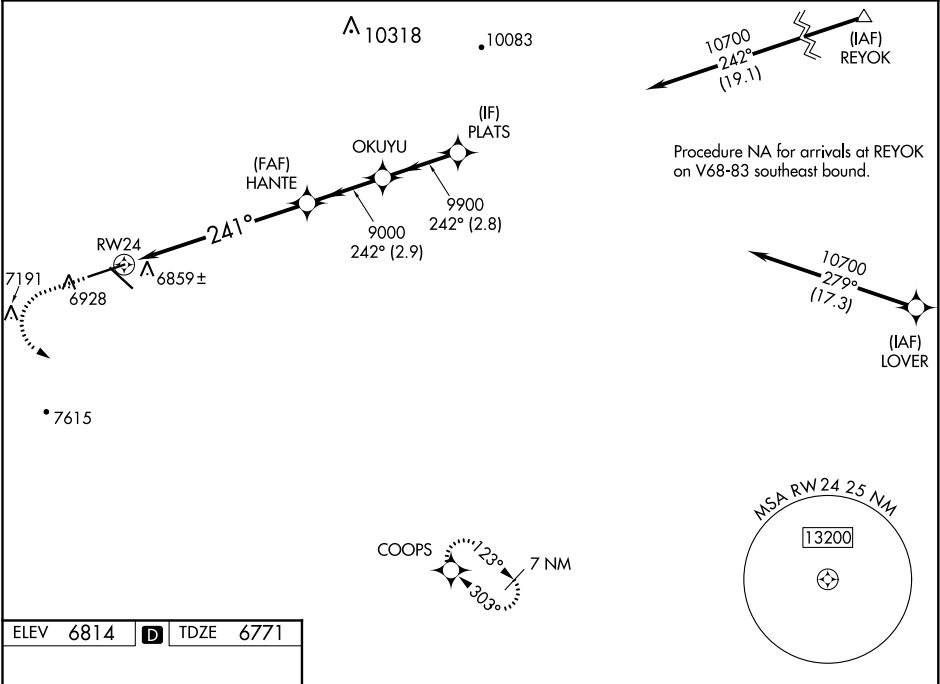
**RNAV (GPS) RWY 24**  
SIERRA BLANCA RGNL (SRR)

**NA**

For uncompensated Baro-VNAV systems, LNAV/VNAV NA below -28°C (-18°F) or above 48°C (118°F).  
DME/DME RNP-0.3 NA. Circling NA to Rwy 12/30.  
When local altimeter setting not received, procedure NA.

MISSED APPROACH: Climb to 7500 then climbing left turn to 10000 direct COOPS and hold.

AWOS-3 <b>126.475</b>	ALBUQUERQUE CENTER <b>132.65 257.6</b>	UNICOM <b>122.8 (CTAF)</b>
--------------------------	---	-------------------------------



ELEV <b>6814</b>	<b>D</b>	TDZE <b>6771</b>
------------------	----------	------------------

7500 10000 COOPS

VGSI and RNAV glidepath not coincident (VGSI Angle 3.00°/TCH 38).

PLATS

HANTE OKUYU

9000 9900 10700

RW24

241° 242°

6.9 NM 2.9 NM 2.8 NM

GP 3.00° TCH 51

CATEGORY	A	B	C	D
LPV DA	6971-¾ 200 (200-¾)			
LNAV/VNAV DA	7220-1½ 449 (400-1½)			
LNAV MDA	7380-1 609 (600-1)		7380-1¾ 609 (600-1¾)	
CIRCLING	7380-1 566 (600-1)		7380-1¾ 7480-2 666 (700-2)	

MIRL Rwy 6-24 and 12-30