

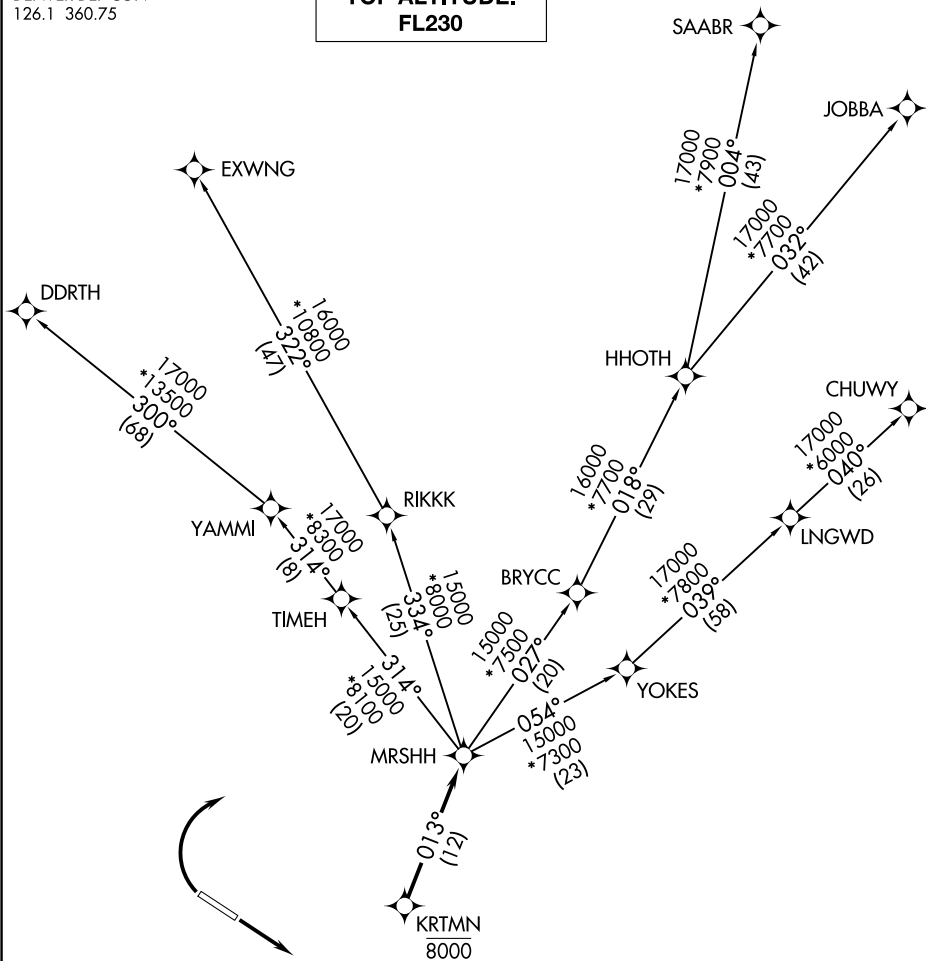
MRSHH ONE DEPARTURE (RNAV)

AL-9041 (FAA)

VANCE BRAND (LMO)
LONGMONT, COLORADO

DENVER DEP CON
126.1 360.75

TOP ALTITUDE:
FL230



TAKEOFF MINIMUMS

Rwy 11: Standard.

Rwy 29: Standard with minimum climb of 370' per NM to 8000.

NOTE: DME/DME/IRU or GPS required.

NOTE: RNAV 1.

NOTE: Turbojets only.

NOTE: RADAR required.

NOTE: Chart not to scale.

(NARRATIVE ON FOLLOWING PAGE)

MRSHH ONE DEPARTURE (RNAV)

(MRSHH1.MRSHH) 26MAR20

LONGMONT, COLORADO
VANCE BRAND (LMO)

SW-1, 03 DEC 2020 to 31 DEC 2020