

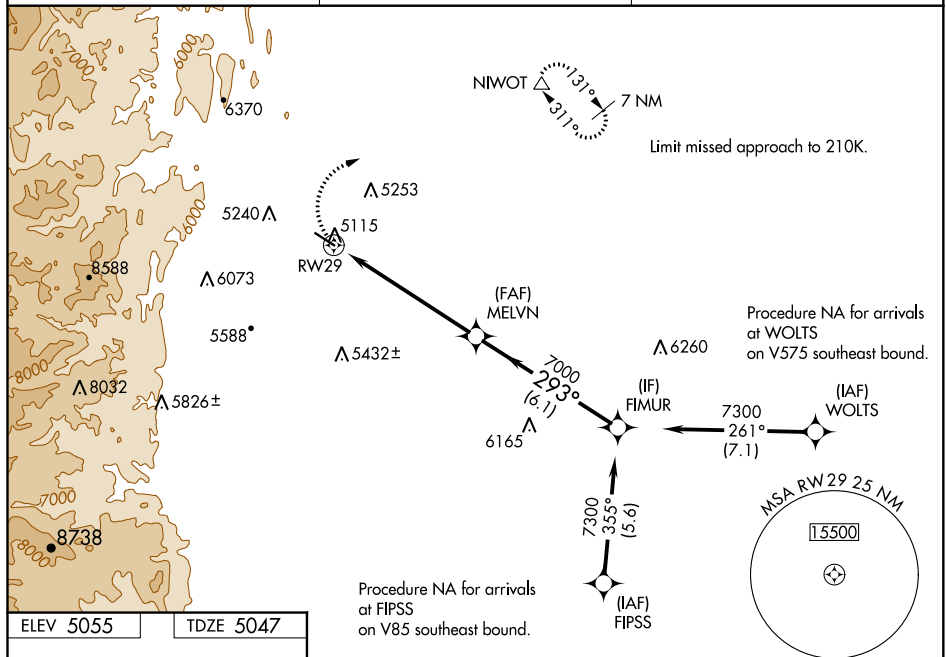
WAAS CH <b>86834</b> <b>W29A</b>	APP CRS <b>293°</b>	Rwy Idg <b>4799</b> TDZE <b>5047</b> Apt Elev <b>5055</b>
----------------------------------------	------------------------	-----------------------------------------------------------------

RNAV (GPS) RWY 29  
VANCE BRAND (LMO)

**⚠** Baro-VNAV NA when using Denver Intl altimeter setting. For uncompensated Baro-VNAV systems, UNAV/VNAV NA below -25°C (-13°F) or above 52°C (127°F). DME/DME RNP-0.3 NA. When local altimeter setting not received, use Denver Intl altimeter setting and increase all DA and MDA 120 feet, increase LPV all Cats visibility  $\frac{3}{8}$  mile, UNAV/VNAV all Cats visibility  $\frac{1}{2}$  mile, UNAV Cat A and Circling Cat A and C visibility  $\frac{1}{4}$  mile.

**MISSED APPROACH:** Climbing right turn to 7400 direct NIWOT and hold, continue climb-in-hold to 7400.

AWOS-3 <b>120.0</b>	DENVER APP CON <b>126.1 360.75</b>	UNICOM <b>122.975 (CTAF) 0</b>
------------------------	---------------------------------------	-----------------------------------



CATEGORY	A	B	C	D
LPV DA	5338-1	291 (300-1)		
LNAV/VNAV DA	5387-1 1/8	340 (400-1 1/8)		
LNAV MDA	5800-1 753 (800-1)	5800-1 1/4 753 (800-1 1/4)	5800-2 1/2 753 (800-2 1/2)	
CIRCLING	5800-1 745 (800-1)	5800-1 1/4 745 (800-1 1/4)	5860-2 1/2 805 (900-2 1/2)	6480-3 1425 (1500-3)